

FRANKLIN P. PERDUE SCHOOL OF BUSINESS

A year of unprecedented expansion and community support.

LETTER FROM THE PRESIDENT



Hurricane Sandy's recent visit to the Eastern Shore brought back to me the start of the last academic year, when we opened to both an earthquake and Hurricane Irene. Though we were fortunate in all of these cases, our hearts go out to all of those in our region and throughout the East who are struggling with the aftermath of this devastating super storm.

All in all, academic year 2011-2012 was one of new beginnings. Last fall, we cut the ribbons on three new facilities on our campus: Sea Gull Square residence-retail complex; Perdue Hall, home to the Perdue School of Business; and the Henson Medical Simulation Center, serving students in nursing and the health sciences as well as community health providers. The latter two were made possible by significant gifts from the Arthur W. Perdue Foundation and the Richard A. Henson Foundation, Inc., respectively. Such benefactors were instrumental in SU's Campaign 2012, which closed this year having almost breached the \$40 million mark.

Our undergraduate academics and research continued to strengthen, thanks to the work of our stellar faculty and augmented by the significant grant resources faculty helped to secure. SU celebrated its first student Fulbright Award. Graduate education received new focus, and international education boomed. Nine of the state's celebrated Teachers of the Year for 2011 were SU graduates, and SU's impacts across the state were also felt through strong programs in distance education. Athletic programs outdid themselves, with SU's men's lacrosse winning its 10th national championship and Sea Gull teams boasting 13 conference championships, five NCAA regional finalists and four NCAA quarterfinalists! Our cultural offerings continued to add richness to the campus and the community, while building our appreciation for the beauty and culture of all peoples.

As we embrace the next academic year with renewed vigor, I offer my thanks to all who continue to support those accomplishments in large and small ways.

Janet Dudley-Eshbach, Ph.D.
President

Business Education Partnership

SU signed an agreement allowing government contracting students at Cecil College in North East, MD, to simultaneously pursue bachelor's degrees in business management through SU's Perdue School of Business. Distance learning classrooms in Perdue Hall – part of some \$3.1 million in new technology installed in the building – enable Perdue School faculty to broadcast lectures and class assignments some 120 miles north to Cecil. A live chat feature will allow those students to participate in class discussions. Since 2005, SU has partnered with Cecil to offer a bachelor's program in social work via distance learning. The business program not only will strengthen that partnership, but provide opportunities for the area's changing population. "We are particularly excited to offer this degree at Cecil College as part of our efforts to support the BRAC initiative at Aberdeen Proving Ground," said Dr. Melanie Perreault, associate provost.

Exceptional Faculty & Staff

Among numerous faculty honors awarded, Drs. Stephen Adams, Management and Marketing Department, and Donald Spickler, Mathematics and Computer Science Department, were the 2011 SU Distinguished Faculty Award honorees. Adams is an expert in the development of California's renowned Silicon Valley and Spickler is one of the campus' leading student research mentors. Also, Dr. George Whitehead, Psychology Department, was the latest recipient of the community's oldest civic award: the Salisbury Award, recognizing "service that has been the greatest benefit to the happiness, prosperity, intellectual advancement or moral growth of the community." Among staff, two earned the University System of Maryland's highest honor: the Board of Regents Staff Award for Excellence. Donna Messick garnered kudos for Extraordinary Public Service to the University or the Greater Community, and Sandra Ramses (below) won recognition for Exceptional Contribution to the Institution and/or Unit to Which the Person Belongs.





Grants & Scholarship Celebrated

SU celebrated faculty and staff research, publications and creative works during Research Awards and Pub Night at Blackwell Library. During the event, President Janet Dudley-Eshbach and Dr. Clifton Griffin, dean of graduate studies and research, recognized members of the University community who had secured \$500,000 or more in grants. "Faculty and staff have used these grants to fund projects as diverse as studying the Amazon rainforest (below right), offering an arts education program for talented middle and

high school students (below left), training teachers of students learning English as a second language, and expanding University business outreach services, to name just a few," said Dudley-Eshbach. "In addition, faculty and staff have contributed to hundreds of scholarly journals, books and other publications. They are exemplars of academic excellence. Because of these and other efforts, their peers throughout the United States and beyond are seeing firsthand why Salisbury is *A Maryland University of National Distinction*." In all, honorees secured more than \$35 million in grants for SU in the past 10 years.

National Rankings

SU remains a leader in national guidebooks. Selected as a 2011-2012 College of Distinction, SU also was named one of *U.S. News & World Report's* Top Public Regional Universities in the North (the only Maryland campus on that list) for the 15th consecutive year. For the 13th consecutive year, SU was among *The Princeton Review's Best 376 Colleges*. SU also was one of its 220 *Best Northeastern Colleges*. The publication's rankings represent the top 15 percent of colleges and universities, both public and private, in the nation. In addition, SU garnered kudos as a *Kiplinger's* Top 100 "Best Values" in public colleges for the fourth consecutive year.



CAMPUS ACCOLADES

Grant to Analyze Mediation

SU and its Center for Conflict Resolution (below) received a \$750,000 grant from the Maryland Judiciary, the state's judicial system, to analyze the use of alternative dispute resolution (ADR). Jurisdictions statewide are using mediation and ADR programs as other options to litigation in both civil and misdemeanor criminal cases. The University is working in partnership with Community Mediation Maryland and Renbar Consulting, LLC, to assess these practices. Initiated by the Judiciary, the two-part study includes an analysis of the cost-benefits of ADR versus traditional litigation. It also examines the efficiency and effectiveness of various types, styles and strategies of mediation. The Judiciary hopes to shed practices that are not cost effective, and also expand approaches and systems that offer the highest benefits to court systems and citizens of Maryland. While the case for mediation is strong, the study will provide the additional research needed to justify the Judiciary's continued investment in ADR. The Judiciary has been using ADR approaches for the past 12 years. The research team is observing more than 1,100 court-related ADR sessions across the state over 18 months.

A Model of IT Efficiency

SU was one of 16 colleges and universities nationwide honored as a "Model of Efficiency" in April's *University Business* magazine. After purchasing an enterprise resource planning system, SU staffers found gaps in several key areas. The tech team (below), working with offices across campus, developed solutions that were both easier and more economical than other alternatives, saving Salisbury more than \$20,000 a year in direct maintenance costs. In the process of creating new software, the IT Department digitized forms, helping to save paper at a University already known for its sustainable practices. In addition, *eCampus News* named SU its *eCampus of the Month*. The honor is presented to colleges and universities with outstanding information technology services.



Relay Administration Honored

SU's Relay For Life was honored for "Outstanding Administration Support" during the American Cancer Society's South Atlantic Division Collegiate Awards. According to nominator Debbie White, the Salisbury area community manager for the American Cancer Society, the University's support for Relay begins at the top, with President Janet Dudley-Eshbach. Also lauded were Dr. Rosemary M. Thomas, past vice president of University advancement, and Agata Liszkowska, associate director of the University's Center for International Education. Liszkowska has been SU's Relay For Life advisor since the event was first held in 2002. Since then, it has raised over \$750,000 for the American Cancer Society.





Political Leaders Share Insights

During the last academic year, speakers of political importance visited SU. Maryland's former Secretary of Labor, Licensing and Regulation Alexander M. Sanchez (above) keynoted SU's Latino Heritage Month celebration with the talk "Protecting the American Dream: Maryland's Commitment to a Skilled, Educated and Diverse Workforce." Janko Mitric, special assistant to the assistant secretary of the U.S. Department of Veterans Affairs' Office of Congressional and Legislative Affairs, discussed the issue of congressional oversight of and partnership with the armed services, and the unique relationship between Congress and the

military. Maryland Attorney General Doug Gansler spoke on the status of civil rights and gay marriage in the state from a non-partisan perspective. Indian leader Mahatma Gandhi's grandson, Dr. Arun Gandhi, shared his grandfather's teachings and more during the talk "Non-Violence and Personal Responsibility." Her Excellency Marina Kaljurand (below left), Ambassador Extraordinary and Plenipotentiary to the U.S. from the Republic of Estonia, discussed Estonia's strategic partnership with the U.S. and the role of the Baltic States in today's world. Maryland Delegate Adrienne Jones (below right) was honored as SU's 2012 John R. Hargreaves Distinguished Legislative Fellow.



Going Green Gets Noticed

For the third consecutive year, *The Princeton Review*, in partnership with the U.S. Green Building Council (USGBC), named SU one of the nation's most environmentally responsible colleges. The University is featured in the *Guide to 322 Green Colleges*, which highlights impressive environmental and sustainability programs at campuses across the country. "I am honored that *The Princeton Review* again recognized SU for our strong commitment to sustainability," said SU President Janet Dudley-Eshbach. "This dedication is reflected in our academic offerings, including a thriving environmental studies program, and ongoing efforts to find innovative approaches to operate more efficiently and effectively." The 322 colleges in the guide were selected based on "green rating" scores from summer 2011 online profiles and annual guidebooks. SU's rating was 86, on a scale of 60-99. In 2008, SU's Teacher Education and Technology Center became the first LEED-certified new construction project on the Eastern Shore, earning Silver status. Since then, the new Sea Gull Square apartment-retail complex has garnered Silver, and Perdue Hall and renovated Pocomoke Hall earned Gold. Other recent initiatives include a Dining Services partnership with Delaware-based Blue Hen Organics (below) to defer some nine tons of food waste from local landfills weekly. At Blue Hen's composting facility, waste is compressed into fertilizer pellets for area farmers and SU's greenhouse.



STUDENT ACHIEVEMENTS



Ribbon Cut on Sea Gull Square Residence-Retail Complex

SU opened its largest building and newest residence hall. The 230,000-square-foot Sea Gull Square (SGS), a mixed-use development with retail businesses on the ground floor servicing the campus and greater community, provides a striking gateway for visitors arriving from the south. The \$45 million complex opened its doors to some 600 students last fall and, as predicted, is a hit with residents, said Dr. Dane Foust, vice president of student affairs. Nearly twice the size of Holloway Hall (SU's oldest building and the first to house students), SGS offers apartments and amenities rarely seen in traditional dormitories. SGS residents live in 156 apartment-style units, most of them four bedroom, two bath, with a kitchen, washer and dryer, and common area. Each student has his or her own room. The main floor has a conference room for meetings and a faculty office

and apartment to foster living learning interactions. Among the facility's popular features is the Rinnier Multipurpose Room, made possible by a \$50,000 gift from Blair Rinnier, the Rinnier family and Rinnier Development Company as part of SU's Campaign 2012. This high-tech SMART room is used for classes, including a Living Learning Community, and for special residence life programs. There is also an engaging black-and-white pictorial history of the University, dating back to its earliest days. From the highway, visitors are welcomed by Sea Gull Square's eye-catching illuminated clock tower that can be seen from as far away as the University's athletic complex, located across Route 13. Currently, several national and local retailers occupy part of the 23,000 square feet of commercial space on the street level.



First Student Fulbright

Charles Overholt (below), a graduate history student, is the first SU student to earn the prestigious Fulbright Student Fellowship, awarded by the U.S. Department of State's Fulbright Exchange Program. Overholt explores "Hessian Mercenaries and the German Reaction to the American Revolution" at the 485-year-old Philipps-Universität in Marburg, Germany. In addition to classes, he is mentored by two leading scholars on the subject who have already taken great interest in his work. Drs. Holger Gräf and Christoph Kampmann have been editing, translating and publishing the letters of Hessian soldiers stationed in America and the diary of well-connected Hessian officer and landowner Baron Gilsa. Overholt will help with the ongoing project and use the primary documents to explore his own questions about the Hessians.



Graduate Student Council

SU master's in conflict analysis and dispute resolution student Julia Glanz (below) spearheaded the creation of the University's newest advisory body: the Graduate Student Council (GSC). Dedicated to aiding the intellectual, professional, personal and social development of graduate students, the GSC began in early fall 2011. The council has already tackled several issues, including taxation rates for graduate assistants (GAs). Shared governance is a hallmark of the leadership of SU President Janet Dudley-Eshbach. As she recently told *University Business* magazine, she believes it is a vibrant part of campus life. The approximately 30-member GSC includes at least two representatives from each of SU's 15 graduate programs.





Research Takes Center Stage

With undergraduate research as a hallmark of an SU education, it is no surprise that an overwhelming number of students shared the fruits of their labor in the past year. Some 25 SU students attended the 2012 National Conference on Undergraduate Research at Weber State University in Ogden, UT. Topics ranged from the deforestation of the Brazilian Amazon and smart growth on the Lower Eastern Shore to the breast health of minority women and the integral role of registered school nurses. Back on campus, Dr. Roel Lopez of the Institute of Renewable and Natural Resources at Texas A&M University keyed SU's 11th annual Student Research Conference (below). Over 230 students from all four of SU's schools gave

research presentations, including some 116 oral talks and 45 poster displays, as well as two roundtables. At the end of the event, John Wesley Wright (above), an enthusiastic teacher and advisor to Music Department voice students, was awarded the 2012 Outstanding Research Mentor Award. A standout among student researchers, environmental studies major Jessica Johnson (below) was a recipient of the Environmental Protection Agency's (EPA) 2011 Greater Research Opportunity Fellowship. Only 30 of the awards, worth \$42,700 each, are given each year. The fellowships provide students with college funding for their junior and senior years, as well as paid internships at EPA facilities during the summer between those years. Johnson is the third SU student in the past two years to receive the honor.

Answering the Call of Africa

James Townsend (below) was one of 50 national finalists in Chegg for Good's "Africa Is Calling" competition, held in connection with ONE, an advocacy organization that helps raise awareness of extreme poverty and preventable disease in Africa. With 49 other finalists, the international studies and communication arts major embarked on a massive campaign, asking SU students and others to vote for his submission. They voted him into the top 20, earning him an interview that helped a committee select him as one of eight students throughout the U.S. to be offered the internship. Townsend originally experienced some of Africa's poverty-stricken areas when he was hospitalized for malaria while studying in Tanzania on a Benjamin A. Gilman Scholarship from the U.S. State Department in 2010.



FULTON SCHOOL OF LIBERAL ARTS

Horton Earns MPT Award

Maryland Public Television (MPT) honored Tom Horton (below), adjunct faculty in SU's Environmental Studies and English departments, with its prestigious Outdoors Maryland Award for Stewardship of the Environment. At SU, Horton has pioneered a one-of-a-kind experiential kayaking course with adjunct faculty member William Nelson. The five-week summer class allows students to meet with experts in nearly every facet of the Chesapeake Bay while receiving a hands-on, "water's-eye view" of the natural resource. In 2011, he appeared on the MPT show for which his award is named, *Outdoors Maryland*, leading film crews on a similar kayak tour of the Chesapeake with friend Don Baugh of the Chesapeake Bay Foundation. The segment, "The Sacred Places," won a regional Emmy Award for Best Magazine Program Feature. A native of Maryland's Eastern Shore, Horton covered the environment for *The Baltimore Sun* for 32 years from 1972-2004 before leaving to become a freelance reporter and author. His articles have appeared in *National Geographic*, *Rolling Stone*, *The New York Times Magazine* and *Smithsonian*, among others.

Student Wins Ad Awards

Max Millhausen (below), a B.F.A. new media student, put his classroom training to good use, entering – and winning – online advertising production contests. He won his first, for Acuvue's Oasys-brand contact lenses, last spring, netting \$7,500 for a 30-second commercial. Since then, he has won two more contests with a 90-second spot for cost analysis advisor IHS and a 30-second commercial for Poptent Media. The payout: \$10,000 each. His success has led to paid commercial work with Reed Street Productions. He earned \$3,000 to design a Web site promoting its "Run for Your Lives" 5K. He also helped the firm's media department, Happy Go Lucky Productions, produce a nationwide commercial for the event.



Kotlowski Lectures on C-SPAN

Dr. Dean Kotlowski (below), History Department, appeared on C-SPAN3 to discuss "Understanding Richard Nixon and His Era: Domestic Policy." The hour-long program was filmed during a panel discussion, which included Kotlowski, at the Richard Nixon Library and Birthplace in Yorba Linda, CA. Later in the year, a crew from the network visited SU to film Kotlowski's lecture "Richard Nixon and Civil Rights" during his America in the 1970s course. The broadcast of the lecture was part of the network's "American History TV" programming block and *Lectures in History* series. Kotlowski has earned critical acclaim for his book *Nixon's Civil Rights: Politics, Principle and Policy*, published by Harvard University Press.





Pandey Project Aids ELs

A growing number of Delmarva's K-12 students have little or no understanding of classroom lessons due to language barriers. In some places, English Learners (ELs) have increased 400 percent in recent years. Dr. Anjali Pandey (above), an applied linguistics professor in the English Department, earned \$2 million from the U.S. Department of Education for a TARGET-Phase II project designed to aid rural Delmarva teachers in better assisting ELs, especially in the areas of science, technology, engineering and mathematics (STEM). The only Maryland proposal funded in the 2011 competition, Pandey's niche

cohort program was selected from over 230 nationwide. Historically, it is one of SU's largest grants. Topics explored in these graduate-level courses range from intercultural learning and second language acquisition to STEM linguistic literacy. Training also includes English as a Second Language (ESOL) program management and assessment, and Teaching English as a Second Language (TESOL) methodology. Teachers from over 100 schools in seven Delmarva counties participate. Pandey said the initiative is necessary because budget constraints in rural schools make it increasingly difficult to hire and support EL-only teachers.



Faculty Explore Film & TV

Books published by two Fulton School faculty shed light on an important director and British television. Writer-director Richard Linklater's independent films are as well known as his commercial movies. Dr. David Johnson (below, top), English Department, however, was disappointed there was not more scholarly information available on the director or his movies.

He seeks to change that with his book, *Richard Linklater, part of the University of Illinois Press' Contemporary Film Directors series*. In addition to repeated and immersive viewings of Linklater's films,



Johnson spent a considerable amount of time speaking with the director himself, providing insightful conversations that come through in the book. Dr. Darrell Newton (below), Communication Arts Department, published *Paving the Empire Road: BBC Television and Black Britons*. He examines how, unknown to many in the United Kingdom and United States, West Indian immigrants began influencing broadcast policies at the BBC in the 1930s. As racial tensions mounted over the next several decades, the corporation used input from these and other black Britons to produce programming aimed at promoting understanding among individuals despite racism, discrimination and what was called England's "colour bar." Much of Newton's research was based on records from the BBC's archive.



HENSON SCHOOL OF SCIENCE AND TECHNOLOGY



Henson Medical Simulation Center Opens

At the ribbon-cutting of the Richard A. Henson Medical Simulation Center, a \$1 million gift for the center from the Richard A. Henson Foundation, Inc. was announced. The center serves students across disciplines, including nursing and health sciences, as well as community health providers. Under the guidance of faculty, they have opportunities to practice potentially life-saving skills, often involving collaboration and teamwork, in a safe and regulated environment. Through simulation, they develop evaluation and treatment techniques to best care for patients. The \$1.15 million building project is part of SU's ongoing efforts to help reduce the national nursing shortage in the local area and beyond. Offering nearly 5,000 square feet of practical space, the center replicates a medical office, with a waiting room and nurses' station. Featured are four

specialized labs for LDRP (Labor, Delivery, Recovery and Postpartum), neonatal, pediatric and adult care. High-fidelity, computerized, life-like mannequins help replicate demanding and unpredictable clinical situations, allowing students to make real-time decisions and exposing them to a wide range of conditions including premature births, diseases and physical injuries. In a mental health wing, actors serve as "patients" with various psychiatric issues to help students learn effective intervention techniques. Cameras throughout the facility record student interactions for later critique by peers and faculty. The center offers room for growth and expansion with the possible inclusion of lab space for future use by applied health physiology graduate students engaged in fitness, rehabilitation and sports performance analysis.



SU Becomes REU Site

The National Science Foundation selected SU as an official Research Experiences for Undergraduates (REU) site in the fields of computer and information science and engineering. Dr. Enyue (Annie) Lu, Mathematics and Computer Science Department, proposed the \$306,408 project named "EXERCISE: Explore Emerging Computing in Science and Engineering." A total of 24 students from across the country study at SU for three consecutive summers. They explore new parallel programming models such as GPGPU and MapReduce, which allow for complex, simultaneous calculations. Through the interdisciplinary REU program, students pursue individual research projects with help from experienced faculty mentors. All involve using parallel processing systems to quickly solve complex problems. Subjects include analyzing patterns across social networks, reconstructing medical images, increasing function speeds for geographic information systems, and strengthening computer and network security. Visits to NASA's Wallops Flight Facility and Johns Hopkins University's Storage Systems Lab are part of the program. Students also may present research results at regional and national professional conferences.

Mapping Maryland & Beyond

Geography students (below) are garnering real-world experience through SU's interdisciplinary GNApWorks (Government and Nonprofit Application Development) program. The Nature Conservancy's "Put a Naturalist in Your Pocket" initiative was the first project tackled by the group. Anyone exploring the conservancy's preserves across Maryland and the Washington, D.C., metropolitan area may download audio tour apps created by SU students. The audio tour downloads include geo-enabled trail maps with numbered sites – and mp3 tracks to play at each site. Geography students also assisted the state legislature by creating large, full-color maps of land use in each of Maryland's new legislative districts for all 188 state senators and delegates.





STEM @ SU Takes Off

Several new programs began in the last year thanks to a \$996,303 grant from the National Science Foundation to increase the number of graduates in science, technology, engineering and mathematics (STEM) disciplines. SU hosted the second annual Eastern Shore Regional Tournament of the Maryland Science Olympiad, which included 16 teams of middle and high school students from 10 schools across the region. From launching bottle rockets to modeling proteins, the tournament engages students in science-related topics in fun and competitive ways. Keynoting this year's event was astronaut Richard Arnold II of the

National Aeronautics and Space Administration. SU also invited area high school students to Science Nights @ SU, where they explored various STEM fields with experts who discuss current research and career options. Building on these experiences, the University introduced Science Camp @ SU, a free residential summer program. Students were invited to explore STEM fields through lab experiments, hands-on activities, workshops, team challenges and seminars with scientists. Instructors were SU faculty and the topics covered ranged from rocket engineering to the chemistry of cooking. The camp also included engaging field trips.

Supporting Nursing Education

For the third consecutive year, the Nursing Department was a grant recipient of the Robert Wood Johnson Foundation New Careers in Nursing Scholarship Program. SU received \$80,000 to support scholarships for students in the accelerated second B.S. degree program who are traditionally underrepresented in the field of nursing. Three of the scholarship recipients shared the story of their path to nursing to win the "I Believe This About Nursing" national essay contest. According to the Maryland Board of Nursing, SU had the highest pass rate of all University System of Maryland campuses on the National Council Licensure Examination in 2010-2011.



PERDUE SCHOOL OF BUSINESS

Great Leaders = Great Teachers

Participants in the Perdue School Executive Leadership Lecture Series illuminate their paths up the corporate ladder to benefit SU's business students. Last year, three distinguished leaders shared their stories of success. SU alumna Jennifer Falor, North America direct-to-consumer human resources business partner for Nike, Inc., discussed her role in the corporate world and how she combined her passion for sports with business. Prior to joining Nike, she spent 15 years with Limited Brands, the parent company of Bath and Body Works and Victoria's Secret, among others. Jack DeBoer, founder of four hotel chains and the current chairman of Hix Corporation and Consolidated Holdings, Inc., discussed his long-time career in real estate, his passion for flying and insights presented in his book *Risk Only Money: Success in Business Without Risking Family, Friends and Reputation*. McCormick and Company Chairman, President and Chief Executive Officer Alan D. Wilson (below) charted how he has led the spice company to a record \$3.7 billion in sales. Previously, Wilson worked at Procter & Gamble, where he held progressively responsible positions in product supply, procurement and manufacturing.

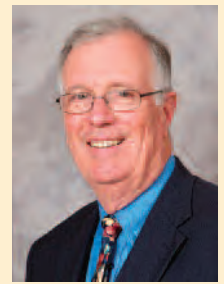
\$100K in Fundraising Reached

Students in Paula Morris' marketing and promotions classes reached a \$100,000 milestone. Each year, Morris tasks students with developing and promoting fundraisers for local charities to give them real-world experience. Last fall, the multi-year total of contributions topped \$100,000. The biggest project students embarked on led to a marketing campaign that remains in use today. In 2005, a team from Morris' class conducted a \$20,000 in-kind study to create a slogan for the Wicomico County Department of Recreation, Parks and Tourism. More than 40 organizations have benefited from the students' efforts. In a recent semester, they earned nearly \$7,000 through events such as Puppy Palooza (below), laser tag and bowling tournaments, a fashion show, and a 5K run.



A Global "Case" for Learning

Business students throughout the world are benefitting from research published by Management and Marketing Department faculty (chair Dr. Frank Shipper below). Their case studies on companies that have employee stock ownership plans are receiving national and international recognition. The National Center for Employee Ownership pledged support for these studies, offering the Perdue School an unsolicited \$10,000 grant from its Rosen Ownership Opportunity Fund. In the past three years, Perdue School case studies have been published in five different languages (English, Chinese, Korean, Spanish and Portuguese) and in at least four textbooks from Cengage Learning and other publishers. They are estimated to reach some 300,000 students around the globe and have received praise from educators at institutions throughout the United States.



Competent Competitors

In the business world, competition is key – and SU students are winning. They brought home the gold ... and the silver ... and the bronze during the Direct Marketing Association of Washington Education Foundation’s (DMAWEF) Collegiate MAXI Competition. Student teams (below top) throughout the mid-Atlantic were challenged to create a marketing plan for the Chevrolet Volt for area automotive dealer Ourisman Chevrolet. SU’s three entries swept the competition. Students from the winning teams automatically qualified to participate in DMAWEF’s “Mentor for a Day” program, through which they visited with DMAWEF member firms (below center) to develop an understanding of career opportunities within those companies. At the World Collegiate Sales Open, 10 percent of the third-round competitors were from SU. Designed to mimic real-world activities that a sales representative would need to master, the event is a multiple-round competition to determine the best sales students. SU also fared well at the National Sales Challenge (below bottom), placing seventh in the United States. Marketing and information systems major Jessica Beever placed third overall in the challenge.



Perdue Hall: A Marriage of Technology & Tradition

Last fall, the University celebrated the partnership that made the newly opened \$55 million Perdue Hall possible. The traditional academic exterior houses the latest resources in business education, including \$3.1 million in new technology. In 2006, the Arthur W. Perdue Foundation gave \$8 million for the construction of the new building – the largest private donation for a capital project in SU history. Remaining funds came from state and private donations. The 113,000-square-foot building features the 200-seat Bennett Family Auditorium. With a 25-foot-long by 9-foot-high screen and two Christie digital projectors with blending image technology, the room has three high-definition video cameras for recording and streaming presentations. The facility also houses four dedicated research labs, allowing users to observe

market tests, focus groups and more behind a two-way mirror, and includes a 70-inch LCD screen for displaying videos. The Business Outreach Services Suite is headquarters for the school’s community outreach efforts. Of particular interest to local entrepreneurs, businesses and service organizations are the Business, Economic and Community Outreach Network (BEACON) and Maryland Small Business Development Center. Included are incubator offices and training and collaboration rooms. The most visually exciting part of the new building is the Franklin P. Perdue Museum of Business and Entrepreneurship. A treasure trove of Perdue family and business archives and memorabilia, the museum was designed as a teaching tool, spotlighting the core ideals and values of Perdue Farms.





State Teachers of the Year

When the Maryland Department of Education announced its 24 county Teachers of the Year for 2011, nine were SU alumni – more than any other campus represented. One of those honored, Chad Pavlekovich (above), a Wicomico County middle school science teacher, was among the finalists in the running to be crowned Maryland Teacher of the Year. In the past decade, three members of the SU community have been honored with the statewide Teacher of the Year title. In addition, 25 percent of this year's 20 finalists for neighboring Delaware's Teacher of the Year were members of the Salisbury community. Two SU graduates have won the prestigious Milken Educator Award, sometimes called "the Oscars for teaching." Yet another has been honored with *The Washington Post's* Distinguished Educational Leadership Award, and *USA Today* has named one among the top teachers in the nation. In nearby Worcester County, so many good things have resulted from a Board of Education-SU partnership, that the National Association of Professional Development Schools took notice. It bestowed them with the 2011 Exemplary Professional Development School Achievement Award – one of only five presented nationwide.

Social Workers in the "Field"

Social work students are making life healthier for the homeless and other vulnerable populations through a community garden created by HALO (Hope and Life Outreach). Four students in the Macro Social Work Practice course have worked hard to support the newly constructed garden located on what was a gravel and dirt parking lot near SU's campus. They raised over \$800 and bought HALO a bird bath, bird feeders complete with seed, a wheel barrow and five berry bushes. Willing to get their hands dirty in addition to fundraising, the four young women spent a day working the garden (below), creating a new garden space and planting the bushes they purchased. The community project not only provides fresh fruit and vegetables to HALO clients, but also encourages clients and organizers to work in the garden, creating additional health benefits. The students aiding HALO are just one out of 39 teams who completed projects to benefit the community during the semester. Through the course and the experiences of volunteering, social work students learned to work with communities and organizations to improve their functioning – a skill that will benefit them greatly in their career path.

Student PDS Presentations

Engaging skits about the environment, special writing projects, Web page design, crisis planning – these are some of the topics education students presented at the 2012 Professional Development Schools (PDS) National Conference in Las Vegas. With them at the conference were support faculty and staff (below). Together, they talked about their PDS site internships, sharing examples of lessons planned and delivered with mentor teachers. They also discussed their action research projects, such as studying the impact of sensorimotor breaks on work completion. Their legacy projects addressed school improvement goals including researching and creating recommended book lists. In a second "open mic" session, they shared wishes for future PDS programs.





People-to-People Sports Exchange

As part of the U.S. State Department's SportsUnited program, some 10 male and female basketball players from the Democratic Republic of the Congo in Africa visited SU (above). While on campus they participated in a skills clinic with Coach Josh Merkel (below left) and members of the SU men's basketball team, and received instruction from SU Health and Sport Sciences Department faculty. Their visit, which also included two Congolese coaches, was part of a 10-day international people-to-people exchange. The SU portion of the trip was coordinated by Dr. Dean Ravizza of the Health and Sport Sciences Department, whose sports and conflict resolution programs and studies in Africa

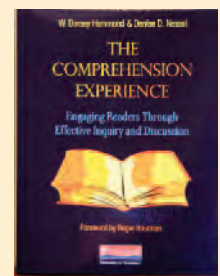


(below right) have earned national attention. At SU, the players learned about injuries, hydration, nutrition, strength and conditioning, and conflict resolution strategies for sports from faculty. The exchange helps the students engage in team building, conflict resolution, physical conditioning and disability awareness in sports. The program builds on Secretary of State Hillary Rodham Clinton's vision of "smart power," bringing individuals together to foster a greater understanding of social norms and cultures. During their U.S. tour, the Congolese players also met with athletes from the NBA and WNBA, and visited Howard University, among other stops. Participants in the SportsUnited program have included NBA players Juwan Howard and Dikembe Mutombo, and WNBA player Nikki McCray.



Hammond Book Draws Raves

The Comprehension Experience, a new book by Dr. Dorsey Hammond, Teacher Education Department emeritus faculty, received rave reviews. Co-authored by education consultant, mentor and writer Denise Nessel of Australia, the book is described by David Pearson of the University of California as "a gift to the profession." *The Comprehension Experience* explains how to teach effective critical thinking processes and promote discussions of K-12 students with fresh, research-driven practices. According to Hammond and Nessel, readers must do more than master skills and learn strategies; they must have highly engaging, deeply satisfying experiences with narrative and informational texts. Hammond and Nessel are both experienced in research and classroom practice. "Most important," they assert, "is to promote readers intellectual and emotional engagement with texts every day through effective thinking and discussion."





Campaign 2012: Taking Excellence to New Heights

SU concluded Campaign 2012, a highly successful fundraising initiative that exceeded its original goal by millions – thanks to community and campus supporters. The initial campaign target was \$25 million. Unparalleled support led that total to be increased twice. The campaign surpassed its goal by nearly \$15 million, concluding just inches from \$40 million. “Salisbury University has a history of doing more with less. I believe that is one reason SU has been ranked a ‘Best Value’ nationally,” said President Janet Dudley-Eshbach. “Since state support alone doesn’t allow us to provide the facilities, programs and scholarships that students need to be competitive in today’s economy, the University has turned to the private sector. As this successful campaign demonstrates, donors at all levels have been enthusiastic and generous. They have

profoundly shaped the future of this campus and community. We are deeply grateful for their unprecedented outpouring of support for higher education at Salisbury University.” The priorities of the campaign were based on the needs of the University, as articulated in its strategic and facilities master plans. The top priority was scholarship funding, including dollars for students and for faculty development and recognition. Highlights of the campaign included a focus on planned giving and stewardship. SU’s President’s Club membership doubled and Varsity Club giving increased 300 percent. At over 16 percent last year, SU’s alumni giving rate also was the highest of University System of Maryland institutions and double the national average of 8 percent.



Sea Gull Century Tops 8K

More than 8,000 cyclists participated in SU’s 23rd annual Sea Gull Century bike ride. Enjoying the flat terrain of the Chesapeake region, cycling enthusiasts came from as far away as Canada, the Virgin Islands and some 40 states. The ride has been called a “Best Bicycling in America” event and also was named among the top 10 century rides in the nation by *Bicycling* magazine. *The Ride Magazine* called it “one of the prettiest big rides in America.” Not only is it Wicomico County’s largest one-day tourism event, but the Perdue School of Business has estimated its annual economic impact on the Lower Shore at \$2.5 million. All proceeds from the ride support programs on campus and in the community, including student scholarships and the local chapter of Habitat for Humanity.



Supporting a Healthy U

After changing the lives of 11,000 members across the Delmarva region, Healthy U of Delmarva came to an end in 2012. Organizers continued to honor community members and groups for promoting healthy choices through its final HUEY Awards, providing some \$6,000 to its winners: Center 4 Clean Start for corporation; Calvin B. Taylor Bank (below) for small business; James M. Bennett High School for education and Trinity United Methodist Church for house of worship. Hudson Health Services won Most Outstanding, and its admission director, Shiela Pullen of Salisbury, was the individual winner. These individuals and organizations were recognized for their creativity and dedication in developing programs to encourage wellness.





Engine for Economic Growth

At the ribbon-cutting of the Sea Gull Square residence hall and retail complex, organizers celebrated a project that represented true partnership and cooperation. The SU Foundation, Inc. was visionary in its purchase of the original property. The construction of the first residence hall on main campus in two decades enjoyed the support of the University System of Maryland. The Main Street style was possible because of collaboration with Rinnier Development Company in partnership with R. Clayton Emory. Some 23,000 square feet are dedicated to ground-floor retail space, which Rinnier and Emory developed. There are 11

retail spaces on the lower level of Sea Gull Square, topped by a residence hall with 185 apartment-style units. Among those businesses leasing the space are Pemberton Apothecary, Roly Poly and Designer's Edge Hair Salon. The University's continuous growth is a major attraction for businesses looking to infiltrate a lucrative market, which SU officials say pumps roughly \$400 million into the local economy each year. Recent construction has contributed an additional \$300 million to the local economy, according to the Perdue School's Business, Economic and Community Outreach Network. Sea Gull Square and Perdue Hall, which were built concurrently, created some 500 jobs throughout their construction.



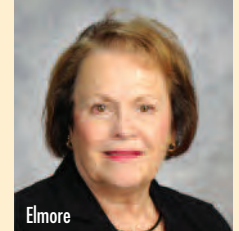
Abercrombie



Bernstein



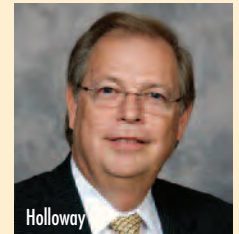
Brosmer



Elmore



Garigliano



Holloway



Marshall



Rosenthal



Snyder



Willey

New Board Members

The Salisbury University Foundation, Inc. recently welcomed 10 new members to its board of directors. They are: Joanna Cato Abercrombie, Kevin Bernstein, Bob Brosmer, Dr. Carolyn Elmore, Michele Garigliano, Richard "Rick" Holloway Jr., Dwight "Duke" Marshall Jr., Dr. Thomas Rosenthal, Dr. Christopher Snyder and Benjamin Willey. Many of the new members have extensive family connections to the University, and all bring a wide range of interests and experiences. The infusion of their ideas and energy will provide the Foundation with excellent guidance, ultimately benefitting students and the entire campus community.

CULTURAL HAPPENINGS

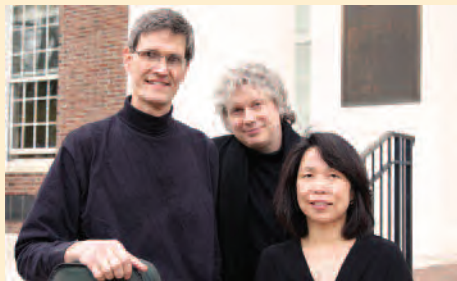
Sounds of Sousa

Established by an act of Congress in 1798 and dubbed "The President's Own" by Thomas Jefferson, the U.S. Marine Band (below) – the nation's oldest professional music organization – performed at SU in the fall. As the only musical organization charged to perform for the president, the U.S. Marine Band has a rich history. The band debuted at the White House on New Year's Day 1801 in a performance for President John Adams. That March, it played during the inauguration of President Jefferson and has performed at every presidential inaugural since. John Philip Sousa was perhaps the organization's most famous member. As its 17th director, from 1880-92, he shaped the band into a world-famous musical organization. Three of his compositions were played at the SU concert.



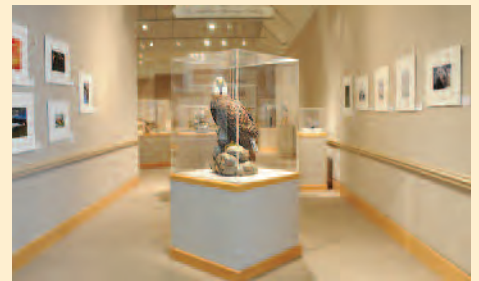
Chamber Music Series

Inaugurated in fall 2011, the Peter and Judy Jackson Chamber Music Series brings skilled musicians from the local community and from throughout the mid-Atlantic to SU. For its first year, three concerts graced the University's concert stage. The Allegheny Baroque Ensemble (below top) presented a program titled "Music from the Italian Baroque" performed on period instruments. The Baltimore Consort, whose albums have placed in *Billboard* magazine's top 10, performed a repertoire that included early music from England, Scotland, France, Italy, Spain and beyond. Closing out the series was classical guitarist Manuel Barrueco (below bottom), who is internationally recognized as one of the most important guitarists of the 20th and 21st centuries.



Ward Earns Accreditation

SU's Ward Museum of Wildfowl Art (below) achieved accreditation from the American Association of Museums (AAM), the highest national recognition for a museum. Accreditation signifies that the Ward Museum has met and exceeded the highest standards of the museum field and is among the best institutions in the country. AAM accreditation is the field's primary vehicle for quality assurance, self-regulation and public accountability. AAM's Museum Accreditation Program promotes practices that enable leaders to make informed decisions, allocate resources wisely and provide the best possible service. The Ward Museum is one of only 13 museums accredited in Maryland and one of only three on the Eastern Shore.





Back by Popular Demand

Among the high points of the year's cultural offerings were repeat engagements from some of the world's best. "Colorful China: A Celebration of China's Ethnic Communities" returned with a presentation of high-spirited song and elaborately costumed dance. The program was derived from research, collection and preservation of the country's 56 ethnic groups by the Chinese National Museum of Ethnology, represented by 48 performers (below right). The American Spiritual Ensemble (below left) once again shared its unique musical art form. The ensemble strives to keep the tradition of American Negro spirituals alive.



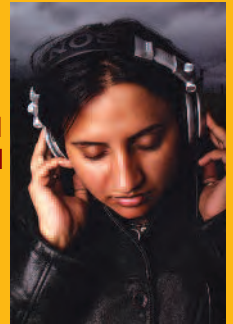
It has performed throughout the world, including such prestigious venues as the Metropolitan and New York City operas. It also has been broadcast as part of the PBS documentary *The Spirituals*. The Alvin Ailey American Dance Theatre (above) shared the history and flair of one of the nation's most celebrated choreographers with SU audiences. Created by Ailey in 1974, the company helps talented students make the transition from the studio to the stage. Visiting 40 cities a year, each performance reflects the company's mission to establish an extended cultural community that provides dance performances, training and community programs for all people.



Fusion-Focused Experiences

As part of an ongoing series, several cultural events illuminated the fusion of the many rich traditions that make up the United States' cultural heritage. DJ Rekha (right) introduced SU to Bhangra, a type of music combining Punjabi folk traditions from southeastern Asia with Western hip-hop. *Newsweek* calls her "one of the top 100 influential South Asians in the United States."

The members of the Grammy-nominated Gerald Clayton Trio (below) looked beyond the ideals of traditional jazz, mixing influences including neo-soul and hip-hop to produce a one-of-a-kind sound.



Singer Gretchen Parlato shared arrangements that blended everything from jazz to R&B, pop classics and even a mixture of some Brazilian sambas. The Zydeco Cha-Chas performed their fast and furious accordion-driven dance music. Originating from the Creole people of southern Louisiana after World War II, zydeco blends rubboard percussion, electric guitars and R&B influences. The *Latin Music USA* film series explored the musical conversation between Latinos and non-Latinos that has helped shape the history of popular music in the United States. University faculty added to the discussion with lectures ranging from a look at the ever-changing face of contemporary families to the fusion of the religious traditions of Buddhism and Shintoism to "Divine Fusion in Milton's *Paradise Lost*."





National Champs

The SU men's lacrosse team delivered its 10th national championship title against the State University of New York at Cortland in a 14-10 victory. This is the seventh perfect season for the men's program. In fact, Salisbury is the only team other than Nazareth College, which won in 1996, to go undefeated and claim the ultimate crown. The record-breaking crowd got their money's worth as the Sea Gulls and Dragons kept the game close, with no team leading by more than two goals at the end of a quarter. Entering the fourth, Salisbury led by a narrow, 10-9 margin. Quick back-to-back goals by each team moved the score to 11-10, but from there, Salisbury's offense took control while the defense stymied the Dragons. Senior attackman Sam Bradman received the Most Outstanding Player Award for the second time in a national championship



game. This back-to-back honor was the first in NCAA history. The Canton, NY, native led SU with six goals and one assist. Defensively, freshman goalie Alex Taylor saved eight shots throughout the contest. The men's lacrosse team had company as a champion titleholder; junior shot put thrower Chelsea Tavik (above) made school history in the NCAA Division III Indoor Track & Field Championships. Tavik claimed SU's first-ever individual national championship by a female student-athlete with a throw of 46' 10.75". Tavik's best effort was matched by Wartburg College's Sarah Hoffmann, which, under NCAA tie-breaking rules, was then determined by each competitor's next best throw. Tavik had Hoffmann beat by a foot in a preliminary-round throw of 46' 8.5", good for a national title.



Academic Champions

Salisbury athletics saw many successes on the field as well as in the classroom. Senior thrower Jennifer Houghton (below) was named by the College Sports Information Directors of America as a Capital One Academic All-American. The honor marked the 19th Academic All-American for SU and is the first for a cross country/track & field student-athlete. Houghton, who was named Salisbury's Female Scholar Athlete of the Year, finished her academic career with a 4.00 grade-point average as she earned communications and marketing degrees. She was honored nine times by the Capital Athletic Conference with All-CAC recognition and had a strong senior season, breaking a seven-year-old school record in the hammer throw, and was an All-CAC second-team honoree in three events. Many other student-athletes collected academic honors, as seven were named to their respective sports Capital One Academic All-District team. Of those seven athletes, SU's baseball, football, women's and men's track & field (2), softball (2) and volleyball teams were represented. The maroon and gold also took home seven team academic awards as Salisbury's men's and women's cross country teams, men's soccer, women's swimming, women's track & field, women's lacrosse and field hockey all claimed honors. Salisbury placed 181 student-athletes on the 2011-12 Capital Athletic Conference All-Academic Team; this is the first time since the 2006 season that SU claimed the top spot over second-place York (PA) College (176 selections).



Football's New Empire

The 2011 season marked Salisbury football's first year in the Empire 8 conference. The season became what was arguably one of the best in program history. The Gulls made their deepest run into the NCAA tournament in 25 years, facing defending-national-champion University of Wisconsin-Whitewater in the NCAA quarterfinals. SU won 11 games, the most for a Salisbury team coached by Sherman Wood in his 13 years. SU claimed the Empire 8 title with its eighth consecutive Regents Cup victory over Frostburg State University, 49-7. The points against FSU helped set a school record for points in a season at 459, a total that grew to 584 by season's end. SU topped Western New England University in the first round of the NCAA tournament, 62-24, in SU's first home tournament game since 2004. Salisbury then survived a triple-overtime thriller against Kean University in the second round, 49-47, to advance to Wisconsin. Wood was named American Football Coaches Association (AFCA) Region I Coach of the Year for the first time in his career. Guard Alex Smith earned AFCA and d3football.com All-American honors. Six players were d3football.com All-Region, and 12 were All-Conference selections.

Directors' Cup Rankings

With such great success on the field, Salisbury placed as one of the top teams in Division III athletics as the National Association of College Directors of Athletics revealed the final Directors' Cup standings. The Sea Gulls finished 13th out of 317 institutions. The men's lacrosse team captured the school's 16th team national championship to earn 100 points, while junior Chelsea Tavik's national title awarded another 57 points toward its total of 643 points. Both the football and field hockey teams advanced to the national quarterfinals, while women's lacrosse (below) collected 90 points for the team's run to the national championship game.



Athletics At A Glance

FALL SPORTS	RECORD	HIGHLIGHT
Men's Cross Country	--	CAC Third Place
Women's Cross Country	--	CAC Champions
Field Hockey	18-2	NCAA Quarterfinalist, CAC Champions
Football	11-2	NCAA Quarterfinalist, Empire 8 Champions
Men's Soccer	13-3-4	NCAA First Round
Women's Soccer	13-6-2	NCAA First Round, CAC Champions
Volleyball	32-4	NCAA Second Round, CAC Champions

WINTER SPORTS	RECORD	HIGHLIGHT
Men's Basketball	12-13	Atkins Academic All-District
Women's Basketball	15-11	CAC Semifinals
Men's Swimming	4-6	CAC 4th place
Women's Swimming	3-7	CAC 5th place

SPRING SPORTS	RECORD	HIGHLIGHT
Baseball	34-9	NCAA Regional Finalist, CAC Champions
Men's Lacrosse	23-0	CAC Champions Tenth national championship in program history
Women's Lacrosse	22-1	NCAA Finalist, CAC Champions
Softball	37-7	NCAA Regional Finalist, CAC Champions
Men's Tennis	11-12	CAC Finalist
Women's Tennis	11-10	CAC Finalist
Men's Track & Field	--	CAC Champions Drenner sets hammer record six times
Women's Track & Field	--	CAC Champions Tavik claims national indoor title in shot put



FINANCIAL REPORT

In Fiscal Year 2012, the University received a 3 percent structural adjustment in its in-state tuition rate that allowed it to make limited strategic investments in its operating budget. While an overwhelming amount of the funds went to institutional-based financial aid, some funds were allocated to graduate and student research initiatives and other funds were used for campus safety initiatives.

As already noted in this report, the University was able to maintain its busy schedule with capital projects. With the openings of both the new Perdue Hall and Sea Gull Square, the campus' landscape has transformed. The University continued making progress on renovating its residence halls and worked with various local agencies to improve pedestrian safety around campus.



University Financial Report Fiscal Year 2012

Revenues	FYE 6/30/12
Tuition & Fees.....	\$47,792,763
State Appropriation.....	39,596,615
Government Grants & Contracts.....	3,985,773
Private Gifts, Endowment Income Non-governmental Grants & Contracts.....	1,221,087
Sales & Services of Educational Departments.....	255,319
Other Income.....	6,046,566
Auxiliary Services.....	48,487,721
Total Current Fund Revenue	\$147,385,844

Expenditures

Education & General:

Instruction.....	\$45,750,869
Research.....	746,734
Public Service.....	5,518,945
Academic Support.....	8,443,474
Student Services.....	5,261,066
Institutional Support.....	13,851,840
Operation & Maintenance of Plant.....	20,467,009
Scholarships & Fellowships.....	115,830
Auxiliary Enterprises.....	34,973,758
Interest on Indebtedness.....	3,716,751
Total Expenditures	\$138,846,276

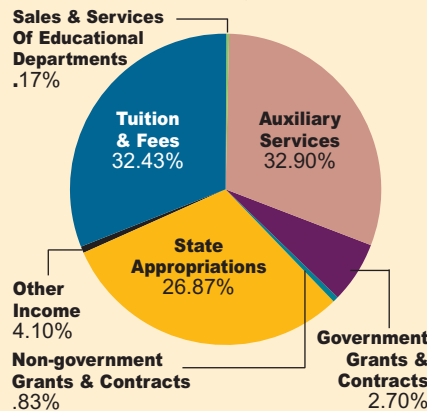
Net Increase in Fund Balance

Over Previous Year.....\$8,539,568

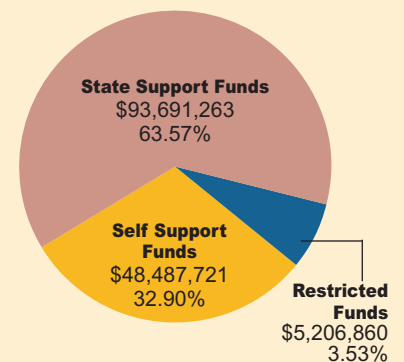
Please Note: The financial information displayed is based on the University's submission to the University System of Maryland (USM) and is published prior to either the USM's or the external auditor's final review. As such, any subsequent changes that may have been requested and/or made are not reflected.

Revenue Distribution FY 2012

Revenue By Source

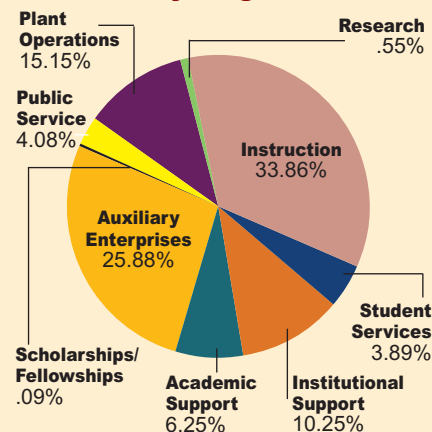


Revenue By Type

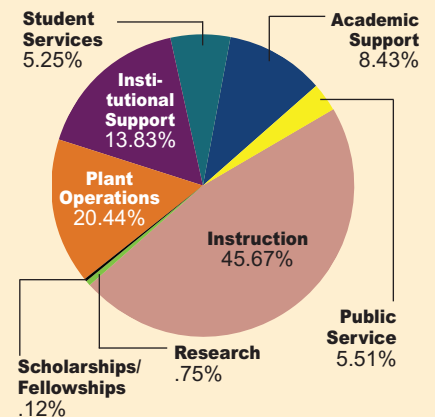


Expenditure Summary FY 2012

Total Expenditure By Program



State Support Expenditure By Program



Academic Programs

CHARLES R. & MARTHA N. FULTON SCHOOL OF LIBERAL ARTS

Undergraduate Departments/ Majors

- Art
 - Art
 - Fine Art
- Communication Arts
- Conflict Analysis and Dispute Resolution
- English
 - English
 - ESOL/K-12 Certification
- Environmental Studies
- History
- Interdisciplinary Studies
- Modern Languages and Intercultural Studies
 - French
 - Spanish
- Music
- Philosophy
- Political Science
 - Political Science
 - International Studies
- Psychology
- Sociology
- Theatre and Dance
 - Theatre

Graduate Degrees

- Master of Arts (M.A.)
 - Conflict Analysis and Dispute Resolution
 - English
 - History

RICHARD A. HENSON SCHOOL OF SCIENCE & TECHNOLOGY

Undergraduate Departments/ Majors

- Biology
 - Biology
 - Biology/Environmental Marine Science
- Chemistry
- Geography and Geosciences
 - Geography
 - Earth Science
- Health Sciences
 - Medical Laboratory Science
 - Respiratory Therapy
- Mathematics and Computer Science
 - Computer Science
 - Mathematics
- Nursing
- Physics

Graduate Degrees

- Master of Science (M.S.)
 - Applied Biology
 - Applied Health Physiology
 - GIS Management
 - Nursing
 - Mathematics Education
- Doctor of Nursing Practice (D.N.P.)

FRANKLIN P. PERDUE SCHOOL OF BUSINESS

Undergraduate Departments/ Majors

- Accounting and Legal Studies
 - Accounting
- Economics and Finance
 - Economics
 - Finance
- Information and Decision Sciences
 - Information Systems
- Management and Marketing
 - Business Administration
 - Management
 - Marketing

Graduate Degree

- Master of Business Administration (M.B.A.)

SAMUEL W. & MARILYN C. SEIDEL SCHOOL OF EDUCATION & PROFESSIONAL STUDIES

Undergraduate Departments/ Majors

- Education Specialties
 - Secondary Teaching Licensure
- Health and Sport Sciences
 - Athletic Training
 - Exercise Science
 - Health Education
 - Physical Education
- Social Work
- Teacher Education
 - Early Childhood Education
 - Elementary Education

Graduate Degrees

- Master of Arts in Teaching (M.A.T.)
- Master of Education (M.Ed.)
 - Curriculum and Instruction
 - Educational Leadership
 - Reading Specialist
- Master of Social Work (M.S.W.)



SU's Leadership

- President:
Dr. Janet Dudley-Eshbach
- Provost and Senior Vice President of Academic Affairs:
Dr. Diane D. Allen
- Vice President of Administration and Finance: Betty P. Crockett
- Vice President of Advancement and External Affairs:
T. Greg Prince
- Vice President of Student Affairs:
Dr. Dane R. Foust
- President's Chief of Staff:
Amy S. Hasson
- Dean of Fulton School of Liberal Arts:
Dr. Maarten L. Pereboom
- Dean of Henson School of Science and Technology:
Dr. Karen L. Olmstead
- Dean of Perdue School of Business: Dr. Bob G. Wood
- Interim Dean of Seidel School of Education and Professional Studies: Dr. Carol A. Wood
- Dean of Graduate Studies and Research: Dr. Clifton P. Griffin
- Dean of Libraries and Instructional Resources:
Dr. Beatriz B. Hardy
- Faculty Senate President:
Dr. J. Craig Clarke
- Graduate Student Council President: Julia Glanz
- Staff Senate President:
John N. Hickman
- Student Government Association President: Katherine Mooney
- University Governance Consortium Chair: Dr. Elizabeth H. Curtin

STATE OF MARYLAND

Governor: Martin O'Malley
Lt. Governor: Anthony G. Brown
Maryland Higher Education Commission Secretary:
Dr. Danette Gerald Howard

UNIVERSITY SYSTEM OF MARYLAND

Dr. William E. Kirwan, Chancellor

BOARD OF REGENTS 2012

James L. Shea, Chair
Gary L. Attman
Norman R. Augustine
Patricia S. Florestano
Louise Michaux Gonzales
Linda R. Gooden
Barry P. Gossett
Earl F. Hance, *ex officio*
Steven Hershkowitz,
Student Regent
Orlan M. Johnson
The Honorable Francis X. Kelly Jr.
David W. Kinkopf
The Honorable C. Thomas McMillen
Dr. Frank M. Reid III
Thomas G. Slater, Esq.
Paul L. Vance
John L. Young, M.D.



Mission

Salisbury University is a premier comprehensive Maryland public university, offering excellent, affordable education in undergraduate liberal arts, sciences, pre-professional and professional programs, including education, nursing, social work and business, and a limited number of applied graduate programs. SU's highest purpose is to empower its students with the knowledge, skills and core values that contribute to active citizenship, gainful employment and lifelong learning in a democratic society and interdependent world.

Salisbury University cultivates and sustains a superior learning community where students, faculty and staff engage one another as teachers, scholars and learners, and where a commitment to excellence and an openness to a broad array of ideas and perspectives are central to all aspects of University life. SU's learning community is student-centered; thus, students and faculty interact in small classroom settings, faculty serve as academic advisors and virtually every student has an opportunity to undertake research with a faculty mentor. SU fosters an environment where individuals make choices that lead to a more successful development of social, physical, occupational, emotional and intellectual well-being.

The University recruits exceptional and diverse faculty, staff, and undergraduate and graduate students from across Maryland, the United States and around the world, supporting all members of the University community as they work together to achieve the institution's goals and vision. Believing that learning and service are vital components of civic life, Salisbury University actively contributes to the local Eastern Shore community and the educational, economic, cultural and social needs of the state and nation.



A Maryland University of National Distinction

A four-year comprehensive university offering 57 distinct undergraduate and graduate degree programs, SU is one of those rare places where individual talents are celebrated while big ideas are encouraged and nurtured.

