



# ANNUAL REPORT

## 2015-2016

*“The University will continue to do all it can to help  
our students, region and state prosper.”*

*— President Janet Dudley-Eshbach*





Guerrieri Academic Commons Construction



Entrepreneurship Competitions



Downtown Expansion

### A Positive Economic Impact

SU's impact on the Eastern Shore economy is approaching half a billion dollars annually and supports almost 3,300 local jobs, according to a 2016 economic impact study. The University adds nearly \$80 million each year to local, state and federal coffers from taxes generated by this activity.

With a community of some 10,500 students, faculty and staff, SU has had an increasingly positive impact on the area economy, growing by some \$130 million in the last decade. A steady, planned increase in student population; hiring of new faculty and staff; and a dynamic reconfiguration of the physical campus with several notable construction projects have been hallmarks of the expansion.

According to BEACON, the Business, Economic And Community Outreach Network, which conducted the study and also one a decade ago, SU currently generates a \$480.5 million annual local economic impact and supports 3,287 jobs.





Respiratory Therapy



Sea Gull Century

## University Accolades



Regents Staff Award



Offering outstanding opportunities to Hispanic students



Dr. Manav Ratti



Dr. Dane Foust



Dr. Andrew Sharma



Payge Jennings

### 'Hispanic Outlook' Top Pick

SU is one of the top 50 colleges in the U.S. offering "outstanding opportunities to Hispanic students" according to *The Hispanic Outlook in Higher Education*. SU was named among the magazine's annual "Publisher's Picks," denoting the top 50 colleges and universities for Hispanic students in the U.S. Joining other institutions, including Harvard, Princeton, Rutgers, Cornell and Penn State universities, this marks Salisbury's first time on the list since the ranking's inception in 1995. "When I came to SU in 2000, one of my first initiatives was to attract a student population that more accurately reflected Maryland's population as a whole," said President Janet Dudley-Eshbach. "This ranking provides validation that those efforts are bearing fruit."



### Fulbright Tradition Continues

SU was named among the nation's top producers of Fulbright Scholars for 2015-16 by the U.S. Department of State's Bureau of Educational and Cultural Affairs. Adding to the list of Fulbright Scholars, Dr. Manav Ratti, English, earned a grant through the Fulbright Canada-RBC Eco-Leadership Program. He received the award to start a sustainable community garden in Salisbury's Newtown Historic District, about 2 miles from the University. Also, Dr. Dane Foust, vice president of student affairs, was selected for the prestigious Fulbright International Education Administrators Seminar Program. Bolstering connections in Europe, Foust traveled to France, visiting campuses and meeting with education officials. In addition to Foust, Dr. Andrew Sharma, Communication Arts, received his second Fulbright to teach at the Indian Institute of Mass Communications and alumna Payge Jennings '14 earned a Fulbright English Teaching Assistantship to South Korea.

### Regents Staff Award

For his efforts keeping the campus' infrastructure running smoothly and interacting with students through organizations such as the SU Outdoor Club, Bob Maddux received one of the University System of Maryland's highest honors: the Board of Regents Staff Award for Excellence. Recognized specifically for Outstanding Service to Students in an Academic or Residential Environment, Maddux is instrumental not only in supervising maintenance activities for the campus' 11 residence halls, as well as the Guerrieri University Center and Commons, but also in welcoming new students to the University. He co-directs the New Student Orientation program "Bike, Beach and Beyond" and often is a rider in the University's annual Sea Gull Century, a 100-mile bicycling event that raises funds for scholarships and other causes. Maddux has been a member of the SU community for more than three decades, serving as multi-trades supervisor since 1997.





## Sharing International and Student Successes

SU's efforts in internationalization and enhancing students' first year at college have placed them among select groups involved in two innovative studies.

The University is one of 13 colleges and universities nationwide participating in the American Council on Education's (ACE's) 13th Internationalization Laboratory Cohort. SU applied for membership and was selected for participation based on the strength of its international initiatives.

SU will assess its ongoing efforts and develop strategies and goals for further campus internationalization. This will include forming leadership teams to work on strategic planning and student outcomes, attending cohort meetings in Washington, participating in site visits and peer reviews, engaging in monthly communication with ACE staff, and working with faculty to encourage considering international perspectives as part of various programs.

In addition, SU was selected by the American Association of State Colleges and Universities (AASCU) to participate in the three year "Re Imagining the First Year of College" (RFY) project, a sweeping initiative aimed at transforming the first year of college to enhance students' success in their undergraduate years and in the 21st century workplace. Salisbury is the only institution in Maryland selected for this initiative and one of only 44 nationally.

As part of the project, SU will select and implement proven, evidence based strategies that focus on four core areas to help first year students succeed: institutional intentionality, curriculum, faculty and staff roles, and student roles. SU also will participate in a learning community with the 43 other selected state colleges and universities. This community will enable RFY participants to attend national conferences and educational webinars, receive one on one mentoring, access online tools and resources, and share ideas, successful strategies and lessons learned.



## Introducing SU's Honors College

Started 35 years ago, the Bellavance Honors Program has transformed into an Honors College with expanded course offerings in business, education, nursing and biology. In addition to two Living Learning Communities, current creative courses include Statistics through Baseball, Music and Power, and Violence in Video Game Design, Theory and Culture. Student learning also involves engaging guest speakers, such as the cartoon editor of *The New Yorker*; study trips to Iceland and other places off the beaten path; and unique volunteering, such as at a horse rescue center. Dr. Jim Buss, Honors dean, hopes the new college will further draw faculty from across campus to teach, developing even more imaginative courses that transcend traditional academic boundaries. The commitment to Honors education benefits students. It already has produced SU's first Gates Cambridge and Fulbright teaching scholars.



## Campus Successes



Dr. Polly Stewart



Dr. George Whitehead



Safe Spaces Seating Dedication



Dr. Alison Dewald



Dr. Elsie Walker

### Ensuring Safe Spaces

As founder of SU's Horizons program (now known as Safe Spaces), Dr. Polly Stewart provided safe spaces for many Lesbian, Gay, Bisexual, Transgender, Questioning, Intersex and Asexual (LGBTQIA) students and faculty during her 30-year tenure at SU. Her legacy lives on more than a decade after her retirement in 2004 and her death in 2013 thanks to a new safe space seating area dedicated in her memory. The Office of Institutional Equity's Safe Space training is an innovative, dynamic, hands-on approach to creating safe spaces for all; focusing specifically on the LGBTQIA community. From the classroom bully to the unintentional exclusion by use of certain language, LGBTQIA people frequently find themselves excluded and uncomfortable in a variety of settings. This workshop aims to reduce the often unwelcoming and even hostile environments in which LGBTQIA people navigate in their daily lives.

### Public Service Honors

Two SU faculty were honored for their exceptional public service.

Dr. Alison Dewald, Chemistry, received a Patriot Award from the U.S. Department of Defense's Maryland Office of Employer Support of the Guard and Reserve (ESGR). She was nominated by an SU student for being highly supportive and understanding of his service in the U.S. Marine Corps Reserve. The award recognizes individuals who "provide outstanding patriotic support and cooperation" to those who have answered their nation's call to serve.

Dr. George Whitehead, Psychology, founded the Wicomico Youth Leadership Academy (YLA), an annual program that has provided leadership training opportunities for hundreds of middle and high school students in the county. For his decade of work with the YLA, Whitehead was named as a national Daily Points of Light Award winner.

### Walker Earns Distinguished Faculty Award

Dr. Elsie Walker, English, earned SU's 2015 Distinguished Faculty Award, honoring exemplary teaching, professional development and service. In the past five years, Walker has presented six international conference papers, produced three peer reviewed publications, guest edited a special pedagogical issue of the journal *Music and the Moving Image* and published the book *Understanding Sound Tracks Through Film Theory*. She also has a second book, *Hearing the Cinema of Michael Haneke*, under contract with Oxford University Press. Walker also serves as co editor of SU's *Literature/Film Quarterly*, a 40 plus year old journal with subscriptions in over 30 countries. She chairs the English Majors Recruitment Committee, advises the English Honors Society and served as a mentor for SU's first student film festival.





## Lenox Honored for Inclusiveness and Fostering Relations

During his first year at SU, Benjamin Lenox earned two prestigious awards.

He was honored nationally as one of Campus Compact's 2016 Newman Civic Fellows for his impact on inclusiveness across campus. An international relations and political science double major, Lenox has been an advocate for LGBTQIA issues on campus. He presented a request to SU's administration to review policies related to gender inclusive housing. He also benchmarked other state institutions and helped facilitate discussions with SU's Student Government Association (SGA) to support greater inclusion across campus.

In addition, he helped make the SGA itself more accessible by advocating for a change to its constitution that now permits any student to run for executive office. He has worked with SU's Counseling Center to promote mental health awareness; assisted with state lobbying efforts for higher education funding; and volunteered for SU's "I Love Salisbury" cleanup event, which builds connections with the community.

Lenox also was honored by the U.S. Department of State's Bureau of Educational and Cultural Affairs with a Critical Language Scholarship. During the summer, he spent two months based in Lucknow, India, immersed in Urdu language and cultural studies. Lenox is one of just 560 U.S. students selected for a CLS scholarship in 2016. The goal, ultimately, is to build relationships with other countries.

Increasing the number of American scholars who speak Urdu and understand the culture will help foster relations in that part of the world, Lenox explained. He hopes to one day work for the U.S. State Department on affairs between the U.S., India and Pakistan.

## Green Fund Projects

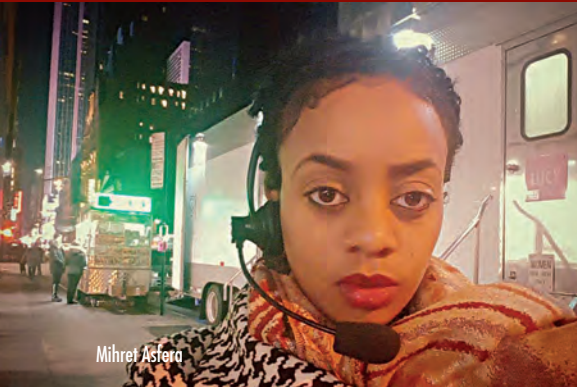
SU students have implemented two new Green Fund projects. A new Solar Dok picnic table, equipped with solar panels, was installed near Henson Science Hall. At the table, students may use stored solar energy to charge their smartphones, tablets and other devices with USB or standard plug inputs while chatting, studying or dining. A push-button requirement and timer ensure energy is not wasted when not in use. Solar power also is used to light the table and its benches at night. SU's Green Fund also supported the purchase of a Green Energy Demonstration Kit, which included solar cooking equipment to illustrate the real-world applications of living green. Green Fund projects may be proposed by individual students or teams involving students.



## Engaged Students



Kate Granzier, actor Colin O'Donoghue and Phoebe Kolesar



Mihret Asfera



Phoebe Kolesar and Kate Granzier



Model UN Club Delegation



Student United Way Chapter

### Model UN Club Recognized

Members of SU's Model United Nations Club earned recognition for their high-level diplomatic negotiations with other students from around the world. SU students Alex Aiosa, McRae Arceo, Kristina Stull and Mahmoud Yousif represented Thailand at the annual National Model United Nations conference in Washington, D.C. For their efforts, SU's team was presented with the Distinguished Delegation Award. This was the team's first national Model UN conference. One of the two committees SU representatives served on confronted the problem of extant landmines, while the other tackled the challenge of preserving world heritage sites. To seek agreement, delegations had to formulate positions that balanced national sovereignty with the need for international cooperation.

### Students Work on Indy Film

Leslie Yarmo (Music, Theatre and Dance Department) invited students Mihret Asfera, Kate Granzier, Phoebe Kolesar and Niamani Robinson to intern with her while she was costume designing the independent film *Carrie Pilby*, shot in New York. Kolesar helped with shopping and actor fittings and ended up working three weeks on the film, including one as a paid assistant. She also appeared with Granzier in front of the camera as an extra. Granzier worked 10 days on the film in costuming. With aspirations to work in set design, Robinson assisted the set dressers. Asfera began her three weeks on the film in costuming. For her final two weeks, she explored her interest in media production by working with the assistant directing team, checking in extras and walking them to the hair and makeup departments, walking actors from their trailers to the filming location, keeping people out of the filming area, and saying "Quiet on the set!" a lot.

### Student United Way Chapter

SU's Student United Way chapter earned the 2014-15 Student United Way Income Award for its impact on financial stability in the community.

SU's Student United Way chapter (the first in Maryland) is a partnership between the University and the United Way of the Lower Eastern Shore. It provides students with opportunities to volunteer and raise funds and awareness for health, education and financial stability issues in the region.

Projects during the chapter's 2014-15 year included building wheelchair ramps for individuals with disabilities, providing landscaping for low-income families, volunteering at the Salisbury Christian Shelter, holiday bell ringing for the Salvation Army, working with area youth at the Salisbury Urban Ministries Kids' Café and advocating for the United Way to help community members in need.





Beautiful Swimmers Revisited



Tom Horton

## City of Salisbury Partnerships

Fulton School faculty and students are partnering with the City of Salisbury to make it a better place to live.

Nine teams of students from Dr. Chrys Egan and Elisabeth Mason's Communication Research Methods classes asked those attending the Salisbury Arts & Entertainment District's November 3rd Friday celebration in downtown Salisbury to finish the sentence "What Salisbury needs is ...."

Some ideas were SU specific, such as extended hours at the Commons and an expanded SafeRide program. Other suggestions included establishing a bike share program, more awareness of Big Brothers Big Sisters of the Greater Chesapeake, and support of the new Salisbury Skate Park and Wicomico Youth & Civic Center, as well as sexual assault prevention training, increased education programs to reduce sexually transmitted infections and a better downtown bar scene. The semester long projects culminated in sharing information with pertinent organizations and with the community via posters.

Another city project was a 16 foot glass and metal public sculpture made by SU art faculty and students, which was dedicated during the grand opening of the Rivers Edge Apartments and Studio for the Arts.

Steven Durow, Art, and the student crew of Chris Foreman, Jason Giusti, Riley Greenwood, Ryan Mariner, Rachel Price and Elena Taylor worked for over a year on the project. Taylor, president of SU's Glass Club, recalled the treacherous weather conditions when the piece was erected with a large crane last spring.

The colorful two ton sculpture is made from two large pieces of steel beam taken from the demolition of a partially constructed structure that sat abandoned on the Wicomico River site for some six years.

## Horton's 'Beautiful Swimmers'

Award-winning writer and SU environmental studies professor of the practice Tom Horton announced production on the film *Beautiful Swimmers Revisited*, inspired by William Warner's 1976 Pulitzer Prize-winning national bestseller, *Beautiful Swimmers: Watermen, Crabs and the Chesapeake Bay*. Horton, who covered the environment for the *Baltimore Sun* for 35 years, has written eight books about the bay. For the film, he is traveling the Chesapeake, using the late Warner's observations as a baseline for comparison of changes that have taken place in the management, culture and science of the waterway's iconic blue crabs. During production, he returns to many of the same places Warner visited, including Smith Island, Deal Island and Crisfield in Maryland, as well as Tangier Island, VA.



## Charles R. and Martha N. Fulton School of Liberal Arts



Archaeology Field School



Philosophy ECI Program Honored

### Light of Literacy Award

The Philosophy Department's Eastern Correctional Institution book discussion program received the Friends of Wicomico Public Libraries' Light of Literacy Award. The award, in the Higher Education Luminary category, was one of eight presented. Through the initiative, SU students meet with ECI inmates to discuss thinkers such as Socrates and Sartre, and themes such as love, freedom and justice. The process often is just as educational for the students as it is for the inmates, according to Dr. Timothy Stock, Philosophy, who leads the program with ECI librarian June Brittingham. Inmates have said their sessions with the SU students are the only times they can have intelligent, positive conversations, strengthening their love of reading.

### Archaeology Field School Drone

The SU archaeological program used its first ever drone to assist with documenting a summer field school at Makemie Monument Park in Virginia.

An attached GoPro camera on the drone took photos and video of structures at Makemie Monument Park. Photos will be imported into 3D mapping software and the video will be uploaded to a public website.

Directing the flight of the drone was visiting professor Dr. Jason Boroughs. Thanks to a grant, Boroughs purchased the drone and joined only a few archaeologists in the country using the technology to assist with capturing the past through photography.

Boroughs will continue to use the drone and hopes to obtain a thermal camera to look for structures, wells, cemeteries and even roadways.

Photo credit: Jay Diem/DelmarvaNow.com

### Student Writers Excel

In the past three years, SU student writers have published more than 150 poems and short stories in national peer reviewed journals and literary magazines. Dozens have been accepted to attend national writers' workshops at well known institutions such as the Vermont Center for the Arts. They also have been accepted to M.F.A. programs many with full funding at schools including New Mexico State, Western Washington, Northern Arizona universities; the University of Idaho; and the University of Nevada, Las Vegas. Three have created their own literary journal that already has gained a nationwide audience. And one has been nominated for the prestigious Pushcart Prize in poetry. In addition, poems from six SU students were selected to appear in an upcoming issue of the poetry journal *Slipstream*. They are among more than 30 accepted poems and stories from SU students this year alone.





Dr. Stuart Hamilton



NSF Project Team

## Habay Earns First NIH Grant

Dr. Stephen Habay, Chemistry, earned the campus' first competitive grant from the National Institutes of Health (NIH). The \$290,538 Academic Research Enhancement Award (AREA) will expand research opportunities for undergraduates and enhance SU's laboratory spaces with new equipment.

Habay compares his work as a synthetic organic chemist to being a "molecular architect." He said, "We design and build complex molecules from simple building blocks that you can purchase or make in the lab." His project involves developing methods for the synthesis of fused bicyclic alkaloids, a special class of compounds that show promise in combatting illnesses ranging from cancer and migraines to hypertension and malaria.

"We have discovered a new way of making these molecules that is quick and efficient from building blocks called oxazolium salts," he said. "Despite the wide availability of these salts to chemists, they have never been used to make alkaloids in this way." Many alkaloids are derived from nature and available only in small quantities. Producing larger amounts synthetically in a lab allows for more research into their medicinal properties.

The best part of the project, Habay said, is being able to involve more students. The grant funds up to 15 paid positions over the next three summers, with other students involved during the semesters. In addition, the grant enables the Chemistry Department to purchase chemicals and supplies for the proposed research, as well as new major, state of the art instruments for use in teaching labs and research courses.

## Hamilton Assists on NSF Project

Dr. Stuart Hamilton, Geography and Geosciences, is assisting with a nearly \$1.8 million National Science Foundation (NSF) project that is examining aquaculture in Africa's Lake Victoria. Hamilton is a co-principal investigator on the team and graduate student Matthew Caddenhead is the first of two SU research assistants working on the project. The team is investigating the potential for aquaculture in Lake Victoria and the implications for wild fisheries and fish commodity markets. They are exploring the bridge aquaculture creates, linking the ecology of the lake (a natural system) with the economy of its surrounding fisheries (a human system). Hamilton is responsible for designing environmental suitability models for various fish species at different stages in their life cycles. He believes the project will contribute to improve food and income security in East African nations that rely on the natural capital provided by Lake Victoria.



# Richard A. Henson School of Science and Technology



Barse billfish research



Geography Field Study



Geography Field Study



## Supporting STEM Jobs

SU was named a 2015-16 STEM Jobs<sup>SM</sup> Approved College by Victory Media. The designation spotlights campuses that offer students STEM-focused programs to best prepare them for careers in the high-growth fields of science, technology, engineering and mathematics. The STEM Jobs<sup>SM</sup> Approved Colleges list includes only 184 campuses nationwide, selected from some 1,800 surveyed. They are rated for aligning their STEM programs with in-demand jobs, having relationships that help students get jobs, attracting and supporting diverse students and faculty, and having resources dedicated to STEM student achievement and success.



## Summer Research Experiences

SU students spent the summer conducting several research projects. May Palace, physics major, was at the University of California, Davis, for a physics-focused Research Experiences for Undergraduates site, fully funded by the National Science Foundation. She worked in a laboratory studying vortices in superfluid helium.

Omar Aboul-Enein, computer science and mathematics major, was at the National Institute of Standards and Technology (NIST) on a Summer Undergraduate Research Fellowship. He assisted the NIST with its performance testing of mobile manipulator robots.

In addition, 13 SU geography students explored the geography of the Colorado Plateau as part of an annual regional field studies course. Students were introduced to the limiting factor of water in the Desert Southwest and how the current drought, and its expected continuation, impacts the major reservoirs and therefore human availability for agricultural, commercial and residential uses.

## Nursing at its Best

SU students have the highest 10-year average pass rate of all University System of Maryland institutions on the National Council Licensure Examination for Registered Nurses, at 91.6 percent. With pass rates increasing for the third consecutive year in 2014-15, SU topped state peers including Johns Hopkins and Towson universities. In addition to successfully graduating highly qualified registered nurses, SU also is preparing more nurse educators and leaders through its new Doctor of Nursing Practice, which earned accreditation from the Commission on Collegiate Nursing Education (CCNE). The department's post-graduate Advanced Practice Registered Nursing (APRN) certificate also received CCNE accreditation. In addition, SU was ranked No. 3 among the "Top 10 Up and Coming Nursing Schools in the East for 2016," according to BestMasterofScienceinNursing.com.





### Bernstein Competition 30th Anniversary

SU alumnus Richard Bernstein and his family joined past finalists and winners of the Bernstein Achievement Award for Excellence to celebrate the 30th anniversary of the 1986 gift Bernstein gave to create the award, which represents first prize in SU's annual Student Entrepreneurship Competitions, held each spring.

Bernstein has been named Ernst & Young's Maryland Entrepreneur of the Year and Maryland's Small Business Person of the Year, among other honors. In 1986, he endowed a student business plan competition at SU that has grown into an annual \$100,000 event, culminating each year with the Bernstein Achievement Award for Excellence. In 2016, finance major Jenna DeLetto made history as the first two time winner of the award.

The past year has been a successful one for DeLetto, whose idea for 5 POP, a football training device programmed to signal players when they are carrying the ball improperly, earned her \$27,000 in cash and prizes during the 2015 competition. Since then, the parent company, 5 POP Sports, co founded with her grandfather, Dave Manners, has won \$35,000 more through similar events.

Since her initial presentation in 2015, she has made a number of modifications to the prototype, including adding a leather cover (which would be an upgrade option for customers) and lightening the device to make it nearly the same weight as an actual football. She and Manners also are working on installing sensors and creating an app that would provide real time analysis on the amount of pressure being applied to the ball by the player's five "points of pressure" (or "POP"): fingers, palm, forearm, bicep and torso.

### Shore Hatchery Update

Seven businesses received their share of \$90,000 during the sixth round of SU's Philip E. and Carole R. Ratcliffe Foundation Shore Hatchery program. A total of 13 new entrants and five returning competitors vied for the prize money through the *Shark Tank*-style competition. Among the top winners were Mobtown Fermentation, which garnered \$30,000 for their company specializing in brewing kombucha, a type of fermented tea, and Soccer Office, gaining \$25,000 for the sports league management company. Administered through SU's Perdue School of Business, the goal of the Ratcliffe Shore Hatchery program is to fund entrepreneurs in the mid-Atlantic and have new businesses opening within six months, with the potential of employing five or more within a year. In addition to funding, winners and participants also receive mentoring support from the program's board.





DMAW EF MAXI Competition



Adams Smithsonian Fellowship

### Enterprise Systems Certificate

SU launched its first online post baccalaureate certificate, in Advanced Technology for Enterprise Systems. The program offers broad knowledge of new technologies associated with enterprise systems, including in memory database management, business analytics, data visualization and mobile application development. Participants gain an understanding of different enterprise systems that capture data; tools to store and access that data; analytical approaches for reporting, visualizing and predicting based on that data; and technology to present data and results via mobile devices. Software from SAP, a leading vendor in enterprise systems and business intelligence systems, is used, providing students with practical skills for the field, in addition to their theoretical understanding.

### Students Win National Marketing Competition

SU students once again have proven themselves among the best marketers in the region, taking the top spot in the spring Direct Marketing Association of Washington Education Foundation (DMAWEF)'s Collegiate MAXI Award Program. The winning team was comprised of Destiny Jones, Genevieve Kurtz and Sierra Little.

In the oral competition, SU's teams vied against Johns Hopkins University (which fielded a team of second-year M.B.A. students) and the University of Maryland College Park to create the top marketing plan for one of three participating nonprofit organizations.

Advised by Paula Morris, Management and Marketing, they proposed a nationwide contest to raise awareness and donations for the Environmental Defense Fund.

This win came on the heels of SU claiming the top two spots in fall competition.

### Adams' Research Recognized

Dr. Stephen B. Adams, Management and Marketing, captures the zeitgeist of inception of the U.S. technology epicenter in his book *Before the Garage: The Beginnings of Silicon Valley, 1909-1960*.

The Smithsonian National Museum of American History recognized the importance of Adams' research, naming him one of four 2015-16 Fellows at the Lemelson Center for the Study of Invention and Innovation. He served a residency at the center, where he delivered a public lecture as part of its colloquium series.

During his fellowship year, he explored the collections of the Smithsonian, as well as other collections in the Washington, D.C., area such as the Library of Congress and National Archives.

In addition, Adams was awarded the U.S. Naval History and Heritage Command's Vice Adm. Edwin B. Hooper Research Grant to continue his study of the history of Silicon Valley.





## Conway Hall Dedicated

SU alumnus Norman H. Conway has dedicated his life to education and the public good, and SU recognized his devotion to learning, to the Eastern Shore and to all of Maryland by rededicating its award winning Teacher Education and Technology Center as Conway Hall.

A member of the Maryland House of Delegates from 1987-2015 and chair of its powerful Appropriations Committee from 2003-2014, Conway was instrumental in helping SU secure funding for the building, which opened in 2008.

After earning his B.A. in education from what was then Salisbury State Teachers College in 1965, Conway returned to pursue his M.Ed., which he received in 1972. He became a well known figure in the Wicomico County education community as a teacher, vice principal and principal. During this time, he was elected to the Salisbury City Council, serving four years as president. In 1986, he was elected to the House of Delegates, quickly rising through the ranks of leadership.

At the time of its opening, Conway Hall was the largest academic structure on campus and was the first U.S. Green Building Council LEED certified new construction project on Maryland's Eastern Shore. *College Planning & Management* magazine also named it one of the 10 best designed new higher education buildings in the U.S. for 2009.

Conway Hall is home to the May Literacy Center, offering after school tutoring and reading programs and the Curriculum Resource Center. Other distinctive features include distance learning classrooms, a 3,000 square foot high definition digital video production studio and an audio recording studio with the capability of 24 track recordings, as well as 15 video editing suites, five audio editing suites and the SU Art Galleries' Electronic Gallery.



Germany Graduation Ceremony



Germany Graduation Class



M.S.W. Hooding in Germany

## Graduates In Germany

In the spring, SU welcomed its inaugural cohort of social work graduates – including two bachelor's and 13 master's degree recipients – in Kaiserslautern, Germany, through an overseas partnership with University of Maryland University College (UMUC). SU's collaboration with UMUC began in 2014 after UMUC was awarded a Department of Defense contract to offer exclusive undergraduate and graduate instruction at military installations across Europe. The social work program meets a need that has been growing over the past decade for social workers who are well-trained to assist those with military connections. The department uses creative instructional approaches to reach students statewide and this collaboration enables them to do the same for military personnel stationed outside the U.S.



# Samuel W. & Marilyn C. Seidel School of Education & Professional Studies



MHEC Grant



Energizing New College Hopefuls



Marilyn Seidel (center)



Lower Shore Visiting  
Intervention Program



## MHEC Grant for College Prep

Dr. Brandy Terrill, Teacher Education, and Dr. Randall Cone, Mathematics and Computer Science, earned a one-year, \$150,000 grant from the Maryland Higher Education Commission's College Preparation Intervention Program to help educate local students about attending college. Working with Wicomico County, their project is focused on "Energizing New College Hopefuls through the Arts, Numerical Sciences and Technology."

As part of the grant, they hosted 30 incoming ninth graders and 12 middle and high school teachers for a week-long summer academic experience. The camp includes such sessions as art and arithmetic; baseball and math; poetry; supercomputers; argument, debate and opinion; personal narratives; math and money; and more.

Terrill and Cone also want to help the students do better on standardized testing in high school by showing them how their reading, writing and mathematics skills are connected to the world around them.

## Addressing Developmental Concerns

SU was awarded \$40,000 from the Quality Health Foundation of Easton, MD, to continue expanding its Lower Shore Visiting Intervention Program (LSVIP). The LSVIP addresses behavioral, mental health and social/emotional developmental concerns exhibited by children from birth to age 5. It provides screenings for children, and offers information, intervention strategies, referrals and assistance in navigating community resources for parents. Originally, SU's early intervention program reached only those involved with licensed daycare providers. Thanks to an initial grant from the foundation last year, visiting intervention services were started to help families and children who are not enrolled with licensed daycares.

## In Memoriam: Marilyn Seidel

SU celebrated the life of one of its benefactors, Marilyn "Lynn" Seidel, at the time of her passing last year. She and her husband, Sam, endowed the Seidel School of Education and Professional Studies in 1997, making it the first named endowed school of education in Maryland and, at the time, only the second in the United States. The \$1 million Seidel gift meant that all four of the University's schools were endowed, a rarity among public institutions nationwide. Much of the endowment was earmarked for scholarships as well as programs supporting faculty and library acquisitions. Prior to their bequest, the Seidels had been recognized leaders in promoting education. They had financed some 14 scholarships throughout the region, seven at SU.





### Guerrieri Academic Commons Finishing Touches

As the Patricia R. Guerrieri Academic Commons began to take shape in the spring, a new “lawn” was planted though most will never see it, and even fewer will ever set foot on it.

Crews from Green Roof Outfitters of Charleston, SC, spent a week at SU installing the building’s green roof, a 20,000 square foot “lawn” atop the building, comprised of a regional blend of plants.

Sitting on a rubber liner in thousands of one foot by two foot plastic trays, the plants cover a majority of the roof. While rooftop gardens are not new at SU University Dining Services unveiled an herb garden atop the Commons dining hall in 2013 the functionality of the Guerrieri Academic Commons’ green roof is unique among SU buildings.

The green roof will act as a collection and filtration system for rainwater landing on the building, absorbing and cleaning the water before a system of stone and concrete collectors distributes it back into the ground, significantly reducing runoff. It also will serve as a natural barrier between the roof and the sun, providing an interior cooling effect for the building.

Areas of the roof not covered by the garden, such as those reserved for HVAC or other equipment, will be painted white to reflect the sun, further reducing the amount of heat entering the building from the outside and reducing the urban heat island effect. These measures will allow less energy to be used in cooling the facility.

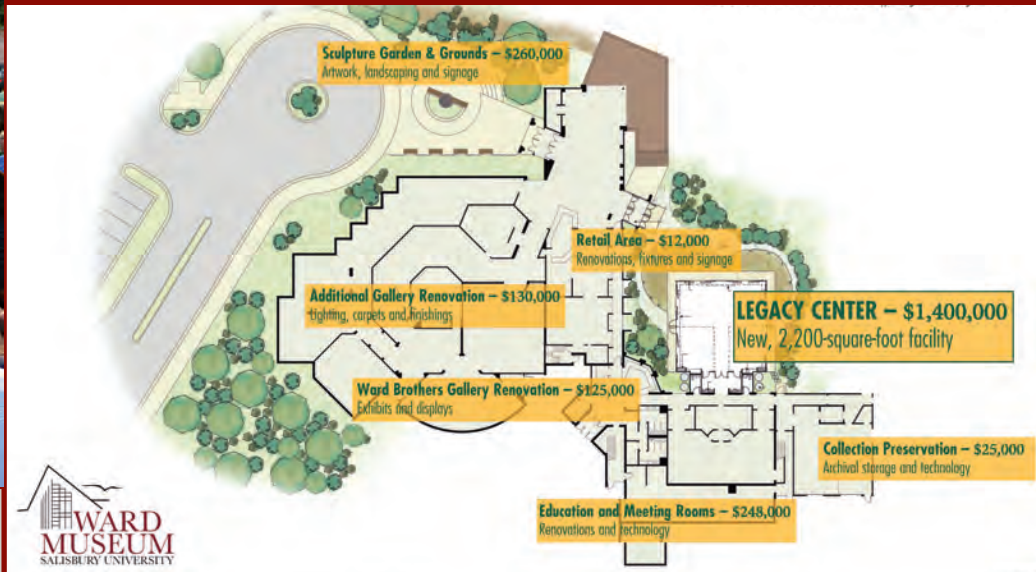
The building was specially designed to support the weight of the green roof. The plants used on the roof are drought tolerant though not all are evergreen.

### Gallery Building Gift

Thanks to local developers Palmer Gillis and Tony Gilkerson, SU has a much anticipated larger presence in downtown Salisbury. They donated one of West Main Street’s signature structures, the Plaza Gallery Building and Annex, to the Salisbury University Foundation, Inc. The gift is valued at some \$4.4 million. Located within the city’s historic district, enterprise zone, and arts and entertainment district, the four story, 60,000 square foot building includes retail, office and residential areas. Potential SU uses for the building include enhancing cultural and extra curricular education offerings, relocating the SU Art Galleries, providing support for young entrepreneurs, and developing engagement opportunities for retirees, volunteers and other community members.



# Salisbury University Foundation, Inc.



Stephanie Willey (right)



Legacy Center Groundbreaking



Dr. Ron Dotterer

## Willey Performing Arts Gift

Alumna Stephanie Willey '82 plans to help future SU students follow their passion for vocal and musical performance, as well as theatre and dance, by creating the Stephanie T. Willey Performing Arts Scholarship. A planned gift, the scholarship will be funded via an IRA that Willey has designated to SU upon her passing. "What I wanted to do was leave a legacy," said Willey, a local sales manager for Comcast Spotlight. "I believe that higher education is very important and the arts face issues with funding nationwide; I thought I could make the biggest difference for students who want to pursue a degree in the performing arts."

## Ward Museum Education Facility

The Ward Foundation, Inc. earned \$300,000 in grant funding from the State of Maryland to support the construction of a new education facility at Salisbury University's Ward Museum of Wildfowl Art – the John A. Luetkemeyer Sr. and Thomas F. Mullan Jr. Legacy Center.

The John A. Luetkemeyer Sr. and Thomas F. Mullan Jr. Legacy Center will add 2,200 square feet to the museum and be used as an education center and flexible meeting space to serve the growing needs of educational and cultural programs for all ages. Last year, SU's Ward Museum increased its educational service to the community by 39 percent, reaching over 20,000 individuals of all ages with educational programs.

## Dotterer Endowed Lecture Series

Past Fulton School of Liberal Arts dean and English professor Dr. Ron Dotterer prepared for retirement after 45 years in the classroom by giving back to SU. The Salisbury University Foundation, Inc. announced the creation of the Dotterer Public Lecture on Literature, endowed with a \$20,000 gift from Dotterer. When considering what he wanted his contribution used for, Dotterer recalled the prestigious speakers that had presented at the University during his tenure – including Nobel laureate Toni Morrison, anthropologist Jane Goodall, feminist pioneer Gloria Steinem, author John Barth, and world leaders Lech Walesa and F.W. deKlerk – and wanted to ensure that students continued to hear from outside voices. Dotterer said though the new series will be focused on literature – teaching English has been one of his life's joys – he intentionally left the topic open-ended enough that speakers could include anyone from scholars to creative writers.





Tibetan Prime Minister Lobsang Sangay

## International Leaders Flock to SU

From *The New Yorker* to Tibet to UNESCO to India, SU welcomed major international speakers to campus last year.

The Bellavance Honors Program welcomed *New Yorker* Cartoon Editor Bob Mankoff, who used his cartoons to explore the audience's potential for greater creativity. Topics included developing creativity and natural talents, how writers and artists can find their own particular voices and messages, and an insider's look at the craft of cartooning itself.

SU's Bosserman Center for Conflict Resolution sponsored a roster of world leaders. Tibetan Prime Minister Lobsang Sangay visited SU just days before a successful primary for his re election as Sikyong (the political successor to the Dalai Lama). His talk explored everything from his early life in the town of Darjeeling and his Fulbright studies at Harvard, to the Buddhist notion of impermanence. He also discussed the challenges of adopting democracy in exile, and the Middle Way approach to bringing stability and coexistence to the people of Tibet and China.

Dr. Mark Brennan, a 1992 alumnus and a professor at The Pennsylvania State University, discussed "Constructing the Defenses of Peace: From Salisbury to UNESCO." Brennan was named the United Nations Educational, Scientific and Cultural Organization (UNESCO) Chair for Community, Leadership and Youth Development at Penn State in 2013. The program helps UNESCO improve communities and the lives of youth globally by fostering research, programs, policy and partnerships.

Anuradha Bhosale, founder of India's AVANI organization and the Women and Child Rights Campaign, shared her experiences as a grassroots women's rights and anti child labor activist based in the Kolhapur district of Maharashtra, where more than 35,000 children are involved daily in labor for local industries. A former child laborer herself, at age 6, Bhosale has spent the past 20 years fighting for the prevention of child exploitation, labor, trafficking and female infanticide.

Bob Mankoff



To Kill A Mockingbird



## On the SU Stage

The SU stage featured an American classic and Italian composer.

The Biron Theatre Program presented *To Kill a Mockingbird*, adapted by Christopher Sergel from Harper Lee's Pulitzer Prize-winning novel. "Through the eyes of a child, we are introduced to a small town ... in the Deep South in the height of the Depression," said Dr. T. Paul Pfeiffer, director. "The long-settled pattern of division between the races and inherent racism is so casual that even children are aware — though they do not grasp its significance."

SU's Opera Theatre Ensemble celebrated the works of 19th- and 20th-century Italian composer Giacomo Puccini and "friends" during its annual performance. Co-directed by Drs. John Wesley Wright and William Folger, and Thomas Anderson, the event featured famous scenes and arias from Puccini's *La Bohème* and *Tosca*, Verdi's *Rigoletto* and Bizet's *Carmen*, highlighting the Puccini one-act opera *Suor Angelica*.



## Cultural Events



Salisbury Symphony Orchestra



Made in America Performer: Cumbia



Made in America Performer: Tango Lovers

### SU Art Galleries Joins Assessment Program

SU Art Galleries is planning for the future following its acceptance into the American Alliance of Museums' Museum Assessment Program. Elizabeth Kauffman, galleries director; Tara Gladden, galleries manager; and assessment team members Ursula Ehrhardt and John Mosher created a 75-page self-study workbook to begin the year-long process. The galleries then were assigned a peer reviewer. Following interviews with staff and a tour of the galleries, the assessment group will make recommendations regarding sustainable operations, growth and improvement. With its acceptance into the Museum Assessment Program, SU Art Galleries joins more than 4,500 other small and mid-sized museums throughout the U.S. that have benefited from the initiative since 1980.

### SSO Celebrates 30 Years

Dedicated to providing the Delmarva Peninsula with live orchestral music, the Salisbury Symphony Orchestra (SSO) at SU celebrated its 30th season and continues to raise the quality of cultural offerings in the region through its commitment to artistic excellence and its creation of exceptional musical experiences. Highlights of the anniversary season included "Viva Viola!" featuring violist Rita Porfiris, who bridges the gap between popular culture and classical music. The SSO's annual Holiday Concert, "Home for the Holidays," welcomed returning guest tenor Dominic Armstrong, who has performed with Deutsche Oper Berlin, Opera Regio Torino and the New York City Opera. Culminating the season was the "American Celebration" concert, featuring the Capitol Quartet, who have earned critical acclaim during concerts with the Baltimore Symphony Orchestra, Cincinnati Pops, U.S. Air Force Heritage of America Band and U.S. Continental Army Band.

### Made in America

The annual Cultural Affairs Office series' topic was "Made in America," and SU explored the evolution of U.S. culture from many diverse influences around the globe to create our uniquely American experience. The series featured The Crooked Road tour, celebrating traditional roots music – which served as the basis for later developing U.S. music. Through Virginia's No BS Brass Band, audiences experienced jazz, a genre of music that originated in African-American communities. The uniquely American music of the Peacherine Ragtime Society Orchestra teamed up with Harold Lloyd Entertainment to celebrate the 100th anniversary of the silent film comedian. In addition, the making of the U.S. National Parks – which sprang from the idea that the most precious portions of the land should be preserved for everyone – was explored through lecture, exhibit and film.





Stadium Opening



Stadium Opening



Stadium Opening

### New Stadium Opens

SU's Sea Gulls are flocking to a new nest. The \$19 million Sea Gull Stadium threw open its doors in the spring. A fitting home for SU's national championship-winning student-athletes and coaches, the stadium includes bleacher seating for nearly 5,000, some 2,800 on the home team side. The stadium has year-round locker rooms for the football, field hockey, and men's and women's lacrosse teams. On the second floor is an athletic training clinic, and the third floor has VIP seating areas with five covered suites for dignitaries and other special guests. The press box on the fourth floor houses the traditional media booth; game operations, including areas for the sports information directors, scoreboard staff, announcers and clock operators; technical facilities for video recording for the Sea Gull Sports Network; booths for home and visiting team coaches; and two radio studio booths for home and visiting teams.

### Lucky 11 for Men's Lacrosse

SU men's lacrosse claimed its 11th men's lacrosse national championship against Tufts University. In the thrilling final seconds, Salisbury junior goalkeeper Colin Reymann denied an attempt by Tufts to tie the game. For his efforts, he was named the game's Most Outstanding Player, as he made 15 saves and led an SU defense that faced a second-half onslaught from the Tufts offense, which led the nation, scoring 17.68 goals per game on the season. The Salisbury offense did its damage in the first 36 minutes of the game, scoring eight-consecutive goals at one point to open up a 9-4 lead at halftime and stretch that edge to 12-4 with nine minutes to play in the third quarter. The win also vaulted Head Coach Jim Berkman into uncharted territory for NCAA men's lacrosse coaches, becoming the first head coach to earn 11 national titles.

### Track & Field Greatness

There is no doubt who the greatest male track & field athlete in SU history is, and Luke Campbell had earned that moniker even before his senior year. In the 2015-16 indoor and outdoor seasons, Campbell claimed four more national championships, to bring his individual total to 11 – which is the most for any Division III male track & field athlete in NCAA history. Campbell not only won his third-straight indoor championship in the 60-meter hurdles, but also he accomplished a goal of winning a national championship as part of a team, with the 4x400-meter relay title along with junior Jerel Madison and sophomores Zach Schmelz and Eric Halton. The two indoor titles gave Campbell nine in his career, tied for the most in NCAA Division III men's history; and during his final outdoor championships at the collegiate level, Campbell capped his historic career.





NCAA Men's  
Lacrosse  
Champions



Luke Campbell



Katie Stouffer



Tim Steindl



Drew Staedeli



Nathaniel Eiben

## Sea Gull Athletics

### Teams At A Glance

FALL SPORTS	RECORD	HIGHLIGHT
Football	7-3	NCAA Tournament, NJAC Co-Champions
Men's Soccer	13-4-3	NCAA Tournament, CAC Champions
Women's Soccer	12-4-2	CAC Tournament
Volleyball	24-8	CAC Finalist
Field Hockey	14-4	NCAA Second Round, CAC Champions
Men's Cross Country		CAC Third Place
Women's Cross Country		CAC Fourth Place
WINTER SPORTS	RECORD	HIGHLIGHT
Men's Basketball	21-7	NCAA First Round
Women's Basketball	13-13	CAC First Round
Men's Indoor Track & Field		NCAA 7th Place; CAC 2nd Place
Women's Indoor Track & Field		CAC 3rd Place
Men's Swimming	4-5	CAC 2nd Place
Women's Swimming	4-5	CAC 3rd Place
SPRING SPORTS	RECORD	HIGHLIGHT
Baseball	26-12	NCAA Regional; CAC Champion
Men's Lacrosse	23-1	NCAA Champion; CAC Final
Women's Lacrosse	18-3	NCAA Regional Final; CAC Champion
Softball	37-6	NCAA Regional Final; CAC Champion
Men's Tennis	10-9	CAC Semifinal
Women's Tennis	13-6	CAC Semifinal
Men's Outdoor Track & Field		NCAA 10th Place; CAC 2nd Place
Women's Outdoor Track & Field		CAC 2nd Place

### Alum Is New Basketball Coach

SU's men's basketball program is now led by a coach who is proud to return to his Alma Mater. Alumnus Andrew Sachs last coached at SU in the early 1990s before being named the head coach of the men's basketball program in 2015. Sachs was an assistant coach with the Sea Gulls from 1988-92 during one of the most successful runs in program history. Sachs has been a coach in high school and college basketball – at Divisions I, II and III – for 24 years before returning to the Salisbury sidelines, where he already has helped the team climb into the national rankings. Sachs is the seventh head coach in the history of the men's basketball program.

### Academic Honors

Sea Gulls excel both on the field and in the classroom

Volleyball player Katie Stouffer was named Academic All American as selected by the College Sports Information Directors of America (CoSIDA). Stouffer carries a 3.96 GPA as an early childhood/elementary education major.

Football's Tim Steindl was named to the CoSIDA Academic All-District Team thanks to his 3.90 GPA in history.

Drew Staedeli and Nathaniel Eiben, men's soccer team, were named to the National Soccer Coaches Association of America's Men's Scholar All-East Region Team. Eiben was named to the second team, with a 3.48 GPA in finance, and Staedeli with a 3.39 GPA in accounting was named to the third team.

The men's and women's swimming teams were named Scholar All-America Teams by the College Swimming Coaches Association of American, while the men's and women's soccer teams each earned the National Soccer Coaches Association of America Team Academic Award.



# Financial Report

## The Year In Review

The University had a successful year financially. Total revenues increased from \$168.4 million to \$175.1 million, primarily due a state appropriation increase (\$3.2 million) and a 2 percent tuition increase (\$2.9 million). Total expenses increased from \$153.1 to \$160.1 million, primarily related to academics (\$3.4 million) and plant operations (\$2.9 million). The University continues to direct funds to implement Strategic Plan goals.

On the capital projects side, construction was completed on Sea Gull Stadium and substantially completed on the Guerrieri Academic Commons (opened in August 2016).

## University Financial Report Fiscal Year 2016

<b>Revenues</b> .....	FYE 6/30/16
Tuition & Fees .....	\$57,889,360
State Appropriation .....	48,092,020
Government Grants & Contracts .....	5,001,875
Non-governmental Grants & Contracts .....	518,138
Sales & Services of Educational Departments .....	208,562
Other Revenues .....	6,740,073
Auxiliary Services .....	56,686,125
<b>Total Revenues</b> .....	<b>\$175,136,153</b>

### Expenses

#### Education & General:

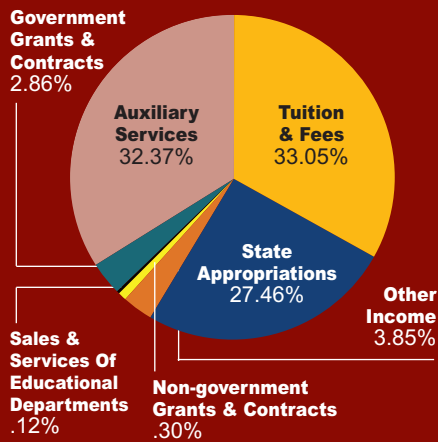
Instruction .....	\$54,807,932
Research .....	1,027,744
Public Service .....	6,673,301
Academic Support .....	11,451,773
Student Services .....	6,893,492
Institutional Support .....	17,268,893
Operation & Maintenance of Plant .....	20,200,513
Scholarships & Fellowships, Net* .....	103,145
Auxiliary Services .....	38,247,495
Interest on Indebtedness .....	3,443,398
<b>Total Expenses</b> .....	<b>160,117,686</b>
<b>Net Increase in Fund Balance</b> .....	<b>\$15,018,467</b>

\* SU's gross scholarships and fellowships are \$15.8 million.

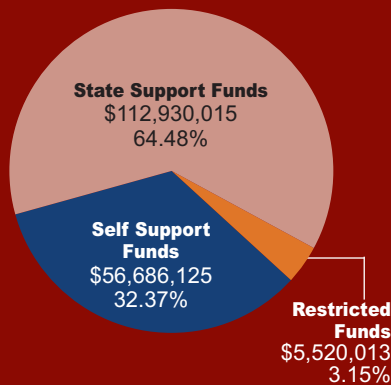
**Please Note:** The financial information displayed is based on the University's submission to the University System of Maryland (USM) and is published prior to either the USM's or the external auditor's final review. As such, any subsequent changes that may have been requested and/or made are not reflected.

### Revenue Distribution FY 2016

#### Revenue By Source

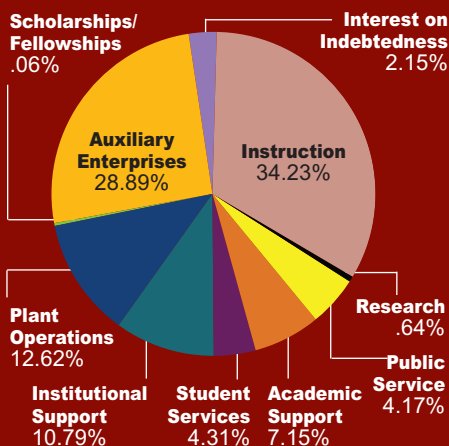


#### Revenue By Type

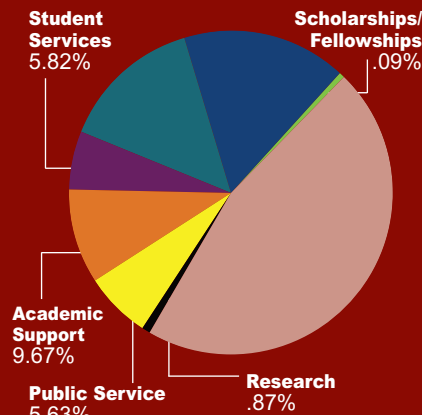


### Expenditure Summary FY 2016

#### Total Expenditure By Program



#### State Support Expenditure By Program





## Academic Programs

### CHARLES R. & MARTHA N. FULTON SCHOOL OF LIBERAL ARTS

#### Undergraduate Departments/Majors

- Art
  - Fine Art
- Communication Arts
- Conflict Analysis and Dispute Resolution
- English
  - English
  - ESOL/K-12 Certification
- Environmental Studies
- History
- Interdisciplinary Studies
- Modern Languages and Intercultural Studies
  - French
  - Spanish
- Music
- Philosophy
- Political Science
  - Political Science
  - International Studies
- Psychology
- Sociology
- Theatre and Dance Theatre

#### Graduate Degrees

- Master of Arts (M.A.)
  - Conflict Analysis and Dispute Resolution
  - English
  - History

### RICHARD A. HENSON SCHOOL OF SCIENCE & TECHNOLOGY

#### Undergraduate Departments/Majors

- Biology
  - Biology
  - Biology/Environmental Marine Science
- Chemistry
- Geography and Geosciences
  - Geography
  - Earth Science
- Health Sciences
  - Medical Laboratory Science
  - Respiratory Therapy
- Mathematics and Computer Science
  - Computer Science
  - Mathematics
- Nursing
- Physics

#### Graduate Degrees

- Master of Science (M.S.)
  - Applied Biology
  - Applied Health Physiology
  - GIS Management
  - Nursing
  - Mathematics Education
- Doctor of Nursing Practice (D.N.P.)

### FRANKLIN P. PERDUE SCHOOL OF BUSINESS

#### Undergraduate Departments/Majors

- Accounting and Legal Studies
  - Accounting
- Economics and Finance
  - Business Economics
  - Economics
  - Finance
- Information and Decision Sciences
  - Information Systems
- Management and Marketing
  - International Business
  - Management
  - Marketing

#### Graduate Degrees

- Master of Business Administration (M.B.A.)

### SAMUEL W. & MARILYN C. SEIDEL SCHOOL OF EDUCATION & PROFESSIONAL STUDIES

#### Undergraduate Departments/Majors

- Education Specialties
  - Secondary Teaching Licensure
- Health and Sport Sciences
  - Community Health
  - Exercise Science
  - Physical Education
- Social Work
- Teacher Education
  - Early Childhood Education
  - Elementary Education

#### Graduate Degrees

- Master of Arts in Teaching (M.A.T.)
- Master of Education (M.Ed.)
  - Curriculum and Instruction
  - Educational Leadership
  - Reading Specialist
- Master of Science in Athletic Training (M.S.A.T.)
- Master of Social Work (M.S.W.)
- Doctor of Education: Contemporary Curriculum Theory and Instruction: Literacy (Ed.D.)

## Mission

Salisbury University is a premier comprehensive Maryland public university, offering excellent, affordable education in undergraduate liberal arts, sciences, pre-professional and professional programs, including education, nursing, social work and business, and a limited number of applied graduate programs. SU's highest purpose is to empower its students with the knowledge, skills and core values that contribute to active citizenship, gainful employment and lifelong learning in a democratic society and interdependent world.

Salisbury University cultivates and sustains a superior learning community where students, faculty and staff engage one another as teachers, scholars and learners, and where a commitment to excellence and an openness to a broad array of ideas and perspectives are central to all aspects of University life. SU's learning community is student centered; thus, students and faculty interact in small classroom settings, faculty serve as academic advisors and virtually every student has an opportunity to undertake research with a faculty mentor. SU fosters an environment where individuals make choices that lead to a more successful development of social, physical, occupational, emotional and intellectual well being.

The University recruits exceptional and diverse faculty, staff, and undergraduate and graduate students from across Maryland, the United States and around the world, supporting all members of the University community as they work together to achieve the institution's goals and vision. Believing that learning and service are vital components of civic life, Salisbury University actively contributes to the local Eastern Shore community and the educational, economic, cultural and social needs of the state and nation.

Salisbury University has a strong institutional commitment to diversity and equal educational opportunities. To that end, the University prohibits discrimination on the basis of sex, gender, marital status, pregnancy, race, color, ethnicity, national origin, age, disability, genetic information, religion, sexual orientation, gender identity or expression, veteran status, or other legally protected characteristics. Direct all inquiries regarding the nondiscrimination policy to the Office of Institutional Equity/Title IX Coordinator, Holloway Hall 100, 410-543-6426. Qualified students with disabilities should contact the Office of Student Disability Support Services at 410-677-6536.

## Salisbury University's Leadership

■ President:  
Dr. Janet Dudley-Eshbach

■ Provost and Senior Vice President of Academic Affairs:  
Dr. Diane D. Allen

■ Interim Vice President of Administration and Finance:  
Marvin L. Pyles

■ Interim Vice President of Advancement and External Affairs:  
Jason E. Curtin

■ Vice President of Student Affairs: Dr. Dane R. Foust

■ President's Chief of Staff:  
Amy S. Hasson

■ Deputy Chief of Staff and Director of Government & Community Relations:  
Robby Sheehan

■ Dean of Fulton School of Liberal Arts:  
Dr. Maarten L. Pereboom

■ Dean of Henson School of Science and Technology:  
Dr. Karen L. Olmstead

■ Dean of Perdue School of Business: Dr. Christy H. Weer

■ Interim Dean of Seidel School of Education and Professional Studies: Dr. Kelly A. Fiala

■ Dean of Graduate Studies and Research:  
Dr. Clifton P. Griffin

■ Dean of Libraries and Instructional Resources:  
Dr. Beatriz B. Hardy

■ Adjunct Faculty Caucus:  
Timothy F. Robinson

■ Faculty Senate President:  
Stephen A. Ford

■ Graduate Student Council President: William Barron

■ Staff Senate Chair:  
Matt D. Hill

■ Student Government Association President:  
Julia Howell

■ Governance Consortium Coordinating Committee Chair:  
Matt D. Hill

### STATE OF MARYLAND

■ Governor:  
Lawrence J. Hogan Jr.

■ Lt. Governor:  
Boyd K. Rutherford

■ Maryland Higher Education Commission Secretary of Higher Education:  
Dr. James D. Fielder Jr.

### UNIVERSITY SYSTEM OF MARYLAND

■ Dr. Robert L. Caret, Chancellor

### BOARD OF REGENTS (2016)

■ James T. Brady, Chair

■ Barry P. Gossett, Vice-Chair

■ Gary L. Attman, Treasurer

■ Linda R. Gooden, Assistant Treasurer

■ Michelle A. Gourdine, M.D., Secretary

■ Thomas G. Slater, Assistant Secretary

■ Norman R. Augustine

■ Joseph Bartenfelder, ex officio

■ Brandon Enriquez, Student Regent

■ Ellen Fish

■ James Holzapfel

■ D'Ana Johnson

■ Robert Neall

■ Robert L. Pevenstein

■ Louis M. Pope

■ Robert D. Rauch

■ Dr. Frank M. Reid III





A comprehensive university offering 59 distinct undergraduate and graduate degree programs, SU is one of those rare places where individual talents are celebrated while big ideas are encouraged and nurtured.



*A Maryland University of National Distinction*